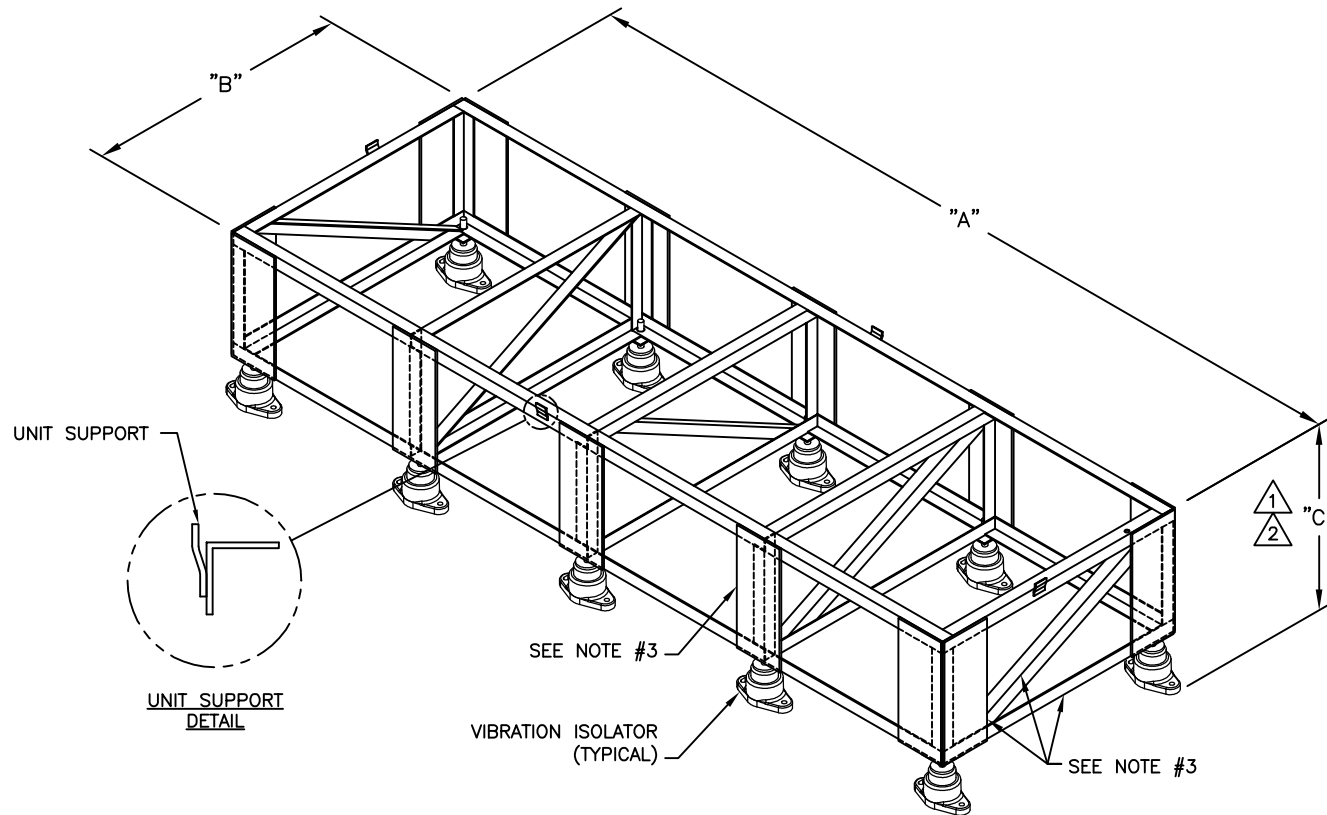


**NOTES:**

1. DIMENSION "C" IS THE TOTAL HEIGHT SPECIFIED ON ORDER. THE HEAVY-DUTY STAND FRAMING, WILL BE BUILT 6 INCHES LESS THAN THE TOTAL HEIGHT SPECIFIED, AND WILL HAVE VIBRATION ISOLATORS THAT PROVIDE  $\pm 0.75$ " INCHES OF ADJUSTMENT FROM THE SPECIFIED HEIGHT.
2. TOTAL SPECIFIED HEIGHT MUST BE BETWEEN 18 AND 36 INCHES HIGH.
3. 1 1/2 X 1 1/2 X 1/8 ANGLE FRAME CONSTRUCTION. 1/4" PLATE CONSTRUCTION AT CORNERS & INTERMEDIATE VERTICAL LOCATIONS.
4. INTERMEDIATE VERTICAL SUPPORTS AND VIBRATION ISOLATOR PLACEMENT WILL VARY, BASED ON THE UNIT SIZE AND WEIGHT. SEE UNIT TABLES.
5. THIS BASE/FLOORSTAND DOES NOT CONSTITUTE CERTIFIED SEISMIC CONSTRUCTION.



REVISIONS				
REV	DESCRIPTION	DATE	BY	FROM
-	-	-	-	-

gForce CHILLED WATER UNITS				
UNIT SIZE (KW)	"A"	"B"	INTERMEDIATE VERTICAL SUPPORTS	QUANTITY OF ISOLATORS
07, 11, 14, 18	33.00	38.50	-	2 FRONT, 2 REAR
25, 32, 39, 46	46.50	38.50	-	2 FRONT, 2 REAR
53, 63, 77, 91	80.00	38.50	1 FRONT, 1 REAR	3 FRONT, 3 REAR
106	103.00	38.50	2 FRONT, 2 REAR	4 FRONT, 4 REAR
141, 158, 176	117.00	38.50	2 FRONT, 2 REAR	4 FRONT, 4 REAR
211	117.00	44.00	2 FRONT, 2 REAR	4 FRONT, 4 REAR
gForce GT DX UNITS				
UNIT SIZE (KW)	"A"	"B"	INTERMEDIATE VERTICAL SUPPORTS	QUANTITY OF ISOLATORS
07, 11, 14, 18	33.00	38.50	-	2 FRONT, 2 REAR
07, 11, 14, 18 ENERGY SAVER/AUX CHW	38.00	38.50	-	2 FRONT, 2 REAR
28, 35, 46	50.50	38.50	-	2 FRONT, 2 REAR
gForce GF DX UNITS				
UNIT SIZE (KW)	"A"	"B"	INTERMEDIATE VERTICAL SUPPORTS	QUANTITY OF ISOLATORS
21, 28, 35, 46	69.50	38.50	1 FRONT, 1 REAR	3 FRONT, 3 REAR
56, 70, 91	97.00	38.50	2 FRONT, 2 REAR	4 FRONT, 4 REAR
106	127.00	38.50	3 FRONT, 3 REAR	5 FRONT, 5 REAR
gForce ULTRA DX UNITS				
UNIT SIZE (KW)	"A"	"B"	INTERMEDIATE VERTICAL SUPPORTS	QUANTITY OF ISOLATORS
22	50.50	38.50	-	2 FRONT, 2 REAR
36, 45	69.50	38.50	1 FRONT, 1 REAR	3 FRONT, 3 REAR
70, 91	103.00	38.50	2 FRONT, 2 REAR	4 FRONT, 4 REAR
125	136.50	38.50	3 FRONT, 3 REAR	5 FRONT, 5 REAR

HEAVY-DUTY FLOORSTAND  
W/VIBRATION ISOLATORS  
gForce FLOOR UNITS

**dataaire**

DRAWN BY :	RK	SCALE: NONE
CHECKED BY :	JB	SH 1 OF 1
DATE :	12-06-2016	REV -

PART OF

**560-918-010**  
DWG NO.