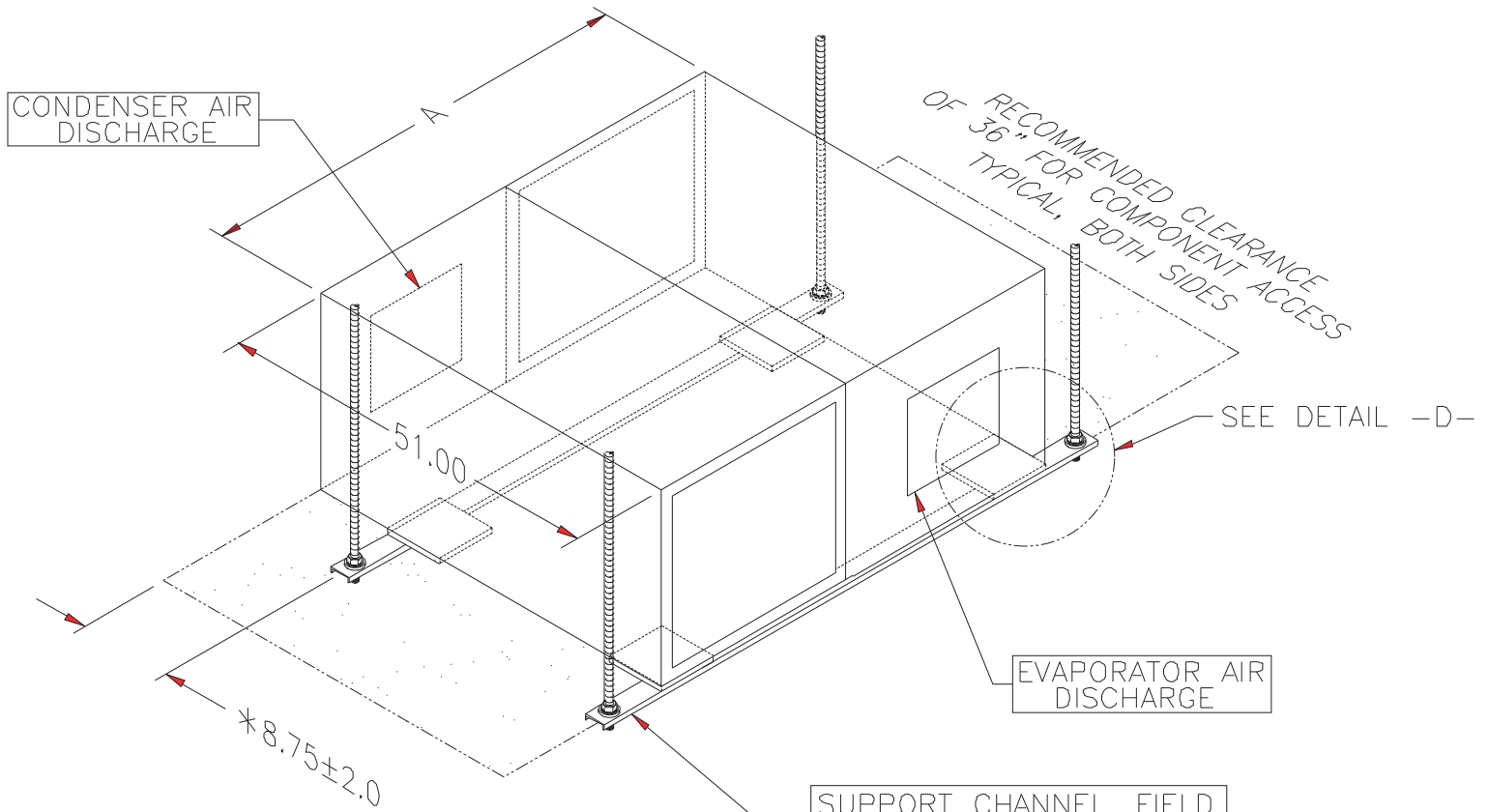
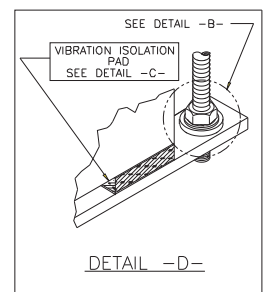
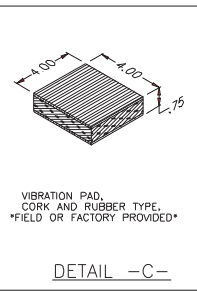
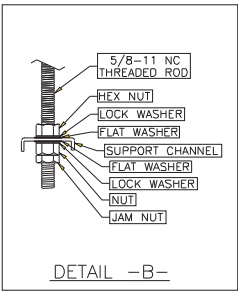
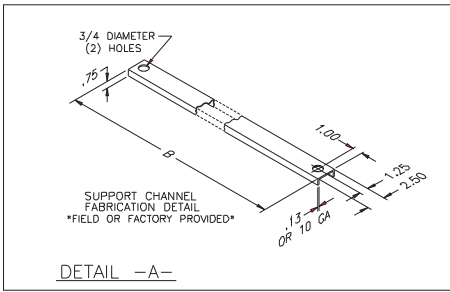


Mini-Plus - Mounting for 49" and 68" wide frames 2.5, 3, 4 and 5 ton



UNIT SIZE	A	B
2 1/2 & 3 TON	49.00	57.00
4 & 5 TON	68.00	76.00



NOTE:

1. UNIT MUST BE LEVEL WHEN INSTALLATION IS COMPLETE.
2. REFER TO DRAWING 535-900-001 FOR PIPING, ELECTRICAL AND COMPONENT LOCATION DETAIL.
3. CONSULT LOCAL BUILDING CODES FOR MOUNTING REQUIREMENTS.

* ALLOWANCE FOR PIPING CLEARANCE

DATE	REVISION	LTR	INT.
7-01-09	UPDATED UNIT SIZING	C	GM
MINI PLUS TYPICAL MOUNTING FOR 49.00 & 68.00 WIDE FRAMES 2 1/2 - 5 TON			
DATA AIRE INC. A CONSTRUCTION SPECIALTIES INC. Company			
DRAWN BY : K. WELLS		SCALE : 1 = 15	
CHECKED BY :		535900011C	
DATE : 4/11/95		SHT. 1 OF 1	
MATERIAL:		P/S NONE	
PART OF			
535-900-011			
PART NO.			