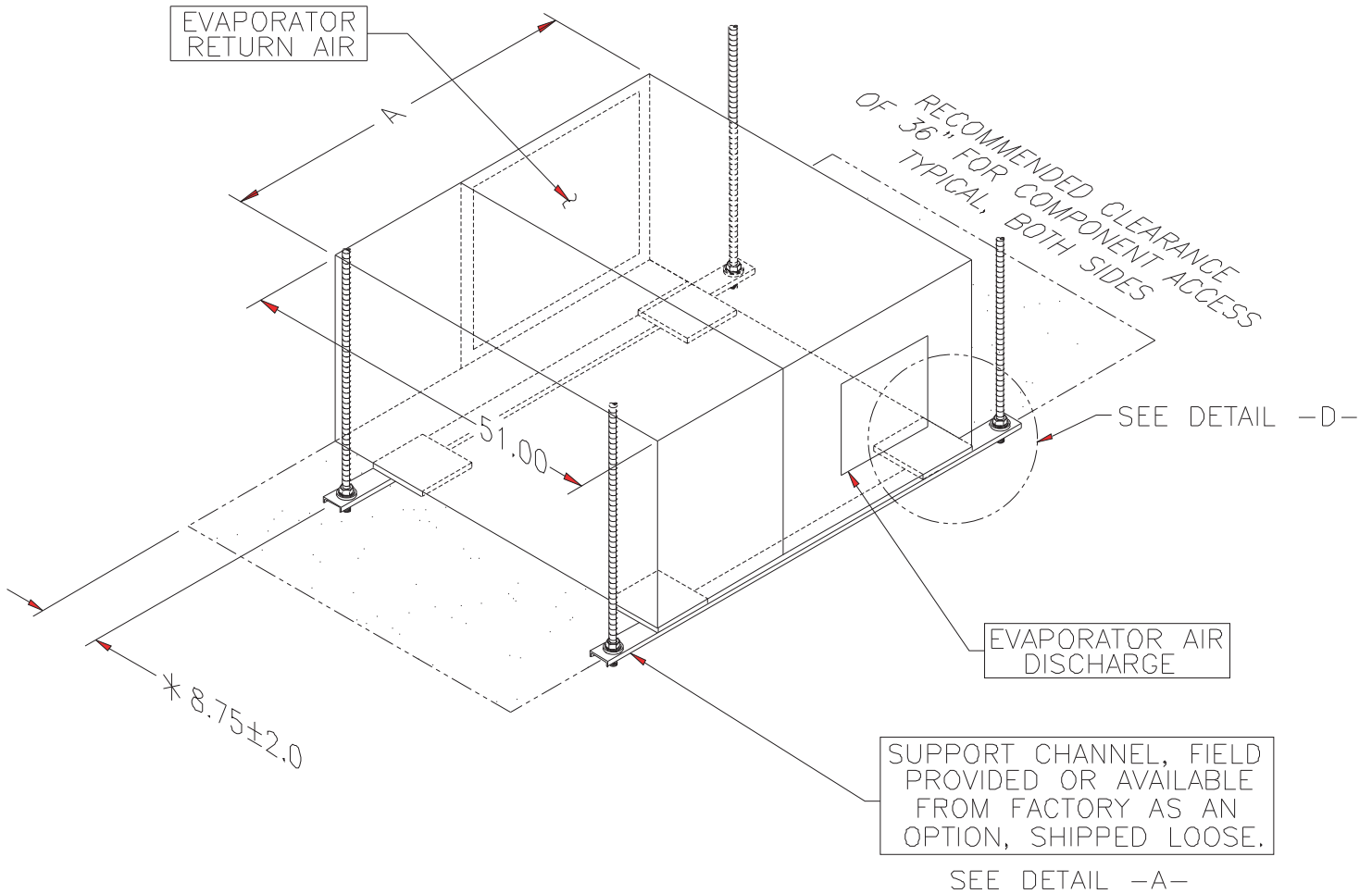
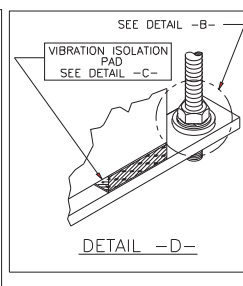
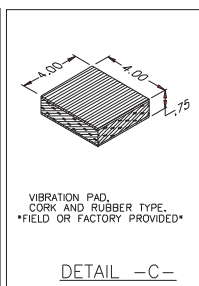
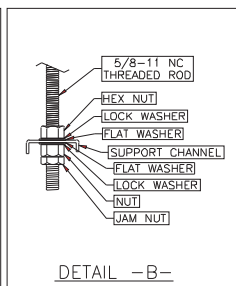
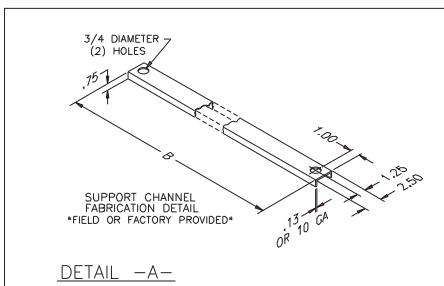


Mini-Plus - Typical Mounting for 44.5" and 54.0" Wide Frames 2.5, 3, 4 and 5 ton



UNIT SIZE	A	B
2 1/2 & 3 TON	44.50	52.50
4 & 5 TON	54.00	62.00

- NOTE:
1. UNIT MUST BE LEVEL WHEN INSTALLATION IS COMPLETE.
 2. REFER TO THESE DRAWINGS FOR PIPING, ELECTRICAL AND COMPONENT LOCATION DETAILS:
535-900-003, 535-900-006 AND 535-900-008
 3. CONSULT LOCAL BUILDING CODES FOR MOUNTING REQUIREMENTS.
- * ALLOWANCE FOR PIPING CLEARANCE



DATE	REVISION	LTR	INT.
7-1-09	UPDATED UNIT SIZING	C	GM
MINI PLUS TYPICAL MOUNTING FOR 44.50 & 54.00 WIDE FRAME 2 1/2 - 5 TON DATA AIRE INC. A CONSTRUCTION SPECIALTIES INC. Company			
DRAWN BY: K. WELLS		SCALE: NONE	
CHECKED BY:		535 900013C	
DATE: 4/6/95		SHT. 1 OF 1	
MATERIAL:		P/S NONE	
PART OF			
535-900-013			
PART NO.			