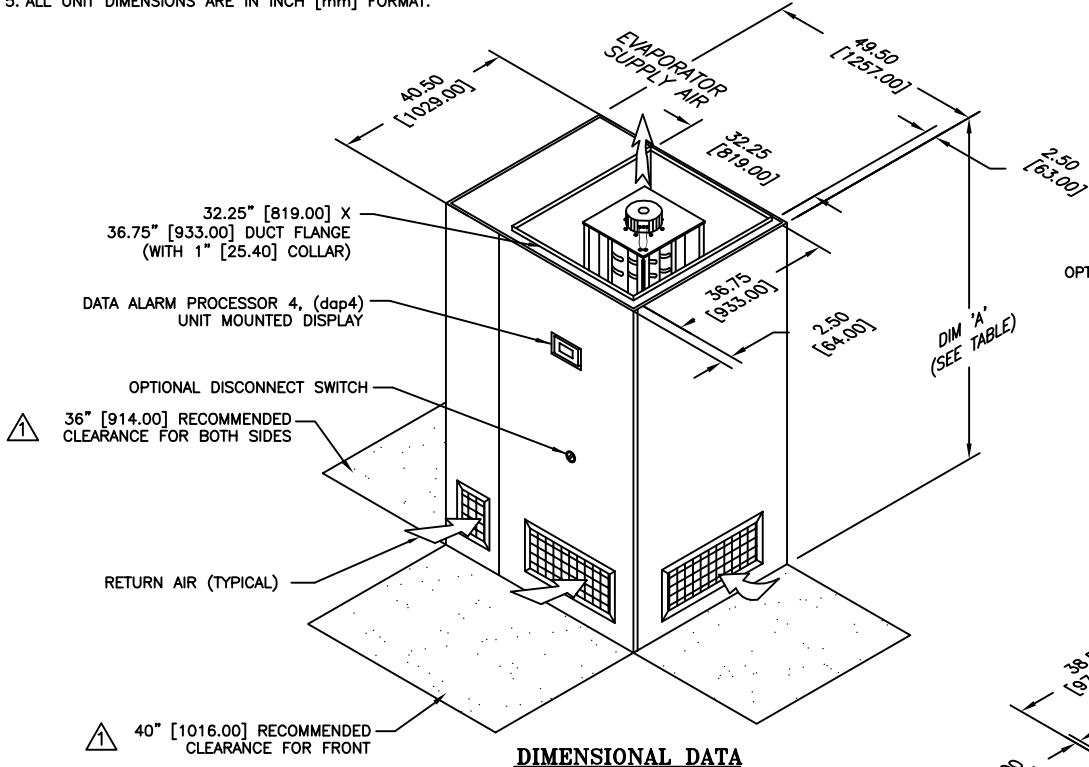


**NOTES:**

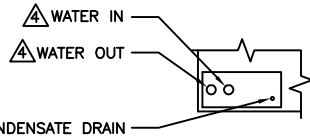
- 1. DIMENSIONS NOTED ARE THE MINIMUM CLEARANCES REQUIRED BY THE FACTORY. CONSULT LOCAL BUILDING CODES AND NEC FOR ADDITIONAL CLEARANCE REQUIREMENTS.
- 2. ALL STANDARD PIPING TERMINATES INSIDE OF CABINET. ALL OPTIONAL PIPING (TOP/SIDE) TERMINATES OUTSIDE OF CABINET.
- 3. NOT ALL COMPONENTS AND OPTIONS ARE SHOWN. LOCATIONS MAY VARY DEPENDING ON OPTIONS.
- 4. CONNECTION PIPE SIZE IS 1 1/8 [29.00] DIAMETER FOR 25 & 32 KW. CONNECTION PIPE SIZE IS 1 5/8 [41.00] DIAMETER FOR 39 & 46 KW.
- 5. ALL UNIT DIMENSIONS ARE IN INCH [mm] FORMAT.

DIM 'A'	
78.00"	[1981.00] WITH 3KW FAN
84.00"	[2134.00] WITH 5KW FAN

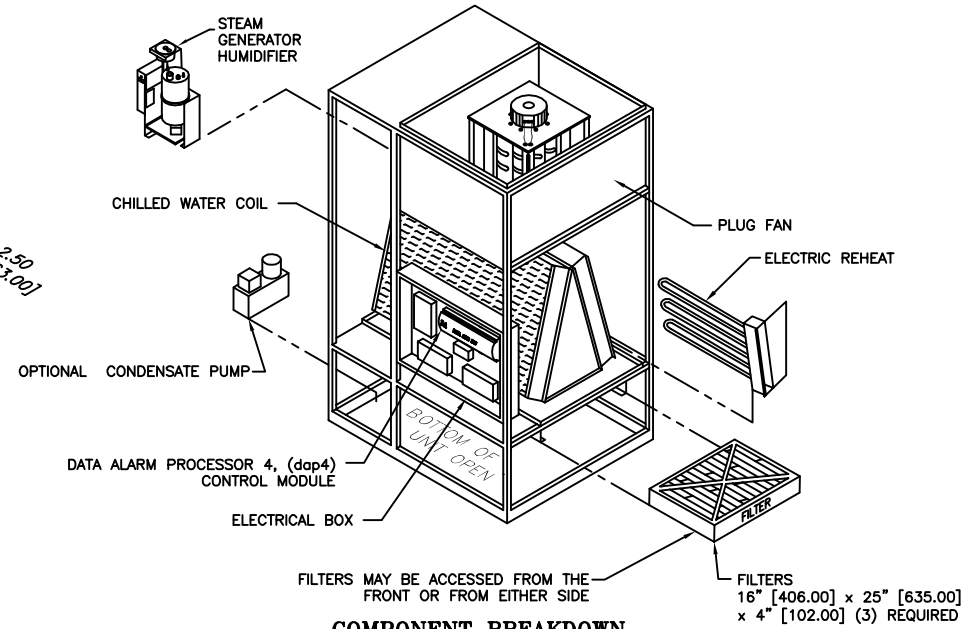
REVISIONS				
REV	DESCRIPTION	DATE	BY	CHKBY
H	RELOCATED OPTIONAL CONDENSATE PUMP	07-06-15	RRK	DM



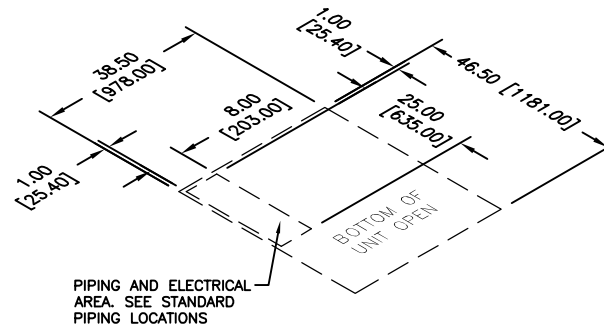
**DIMENSIONAL DATA**



**STANDARD PIPING LOCATIONS**



**COMPONENT BREAKDOWN**



**FOOTPRINT LAYOUT**  
(PIPING & ELECTRICAL AREA REFERENCE)

gForce GF 25, 32, 39 & 46 KW CHILLED WATER UPFLOW			
<b>dataaire</b>			
DRAWN BY : GABE		SCALE: NONE	
CHECKED BY :		SH 1 OF 1	
DATE : 06-16-10	REV	H	
PART OF			
<b>560-900-102</b>			
DWG NO.			