

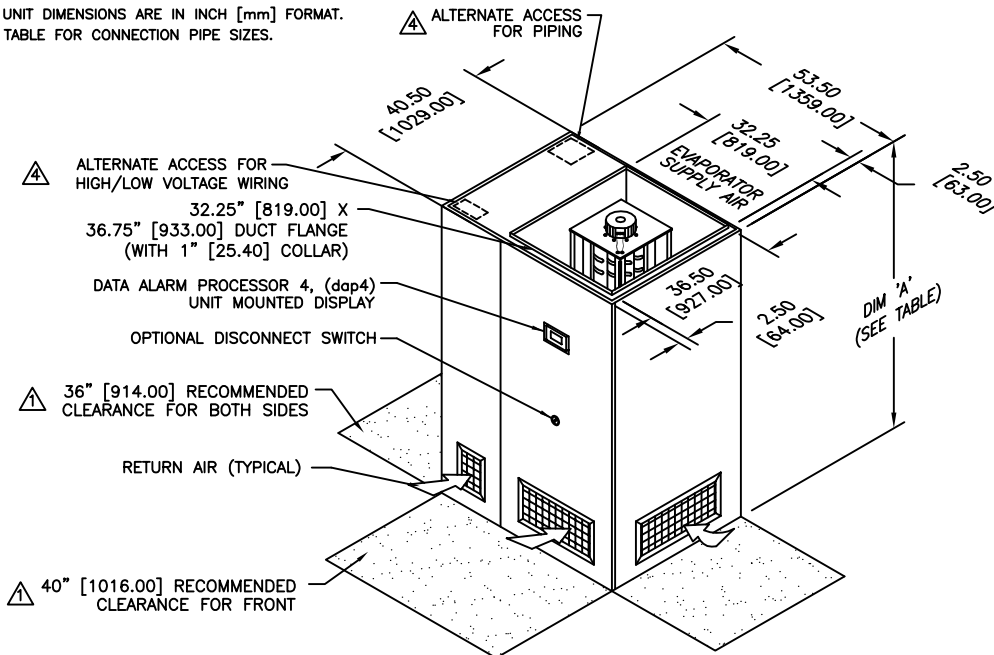
NOTES:

- 1. DIMENSIONS NOTED ARE THE MINIMUM CLEARANCES REQUIRED BY THE FACTORY. CONSULT LOCAL BUILDING CODES AND NEC FOR ADDITIONAL CLEARANCE REQUIREMENTS.
- 2. ALL STANDARD PIPING TERMINATES INSIDE OF CABINET. ALL OPTIONAL PIPING (TOP/SIDE) TERMINATES OUTSIDE OF CABINET.
- 3. NOT ALL COMPONENTS AND OPTIONS ARE SHOWN. LOCATIONS MAY VARY DEPENDING ON OPTIONS.
- 4. OPENINGS ARE NOT PROVIDED FOR ALTERNATE ACCESS LOCATIONS.
- 5. THESE UNITS REQUIRE OUTDOOR CONDENSING UNITS.
- 6. ALL UNIT DIMENSIONS ARE IN INCH [mm] FORMAT.
- 7. SEE TABLE FOR CONNECTION PIPE SIZES.

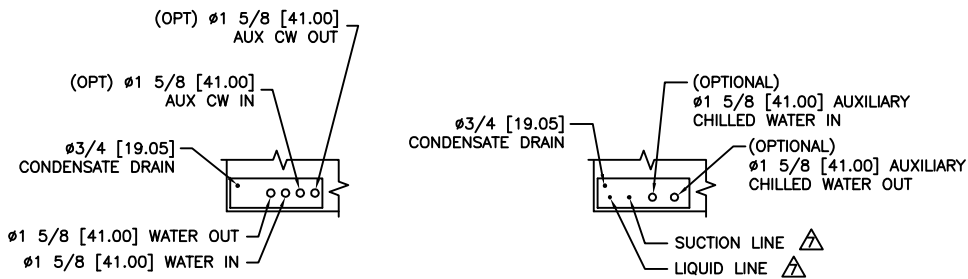
	CONNECTION PIPE SIZE (ø)		
UNIT (KW)	28	35	46
LIQUID	5/8 [15.88]	5/8 [15.88]	7/8 [22.23]
SUCTION	1 3/8 [35.00]	1 3/8 [35.00]	1 3/8 [35.00]

DIM 'A'	
78.00" [1981.00]	WITH 3KW FAN
84.00" [2134.00]	WITH 5KW FAN

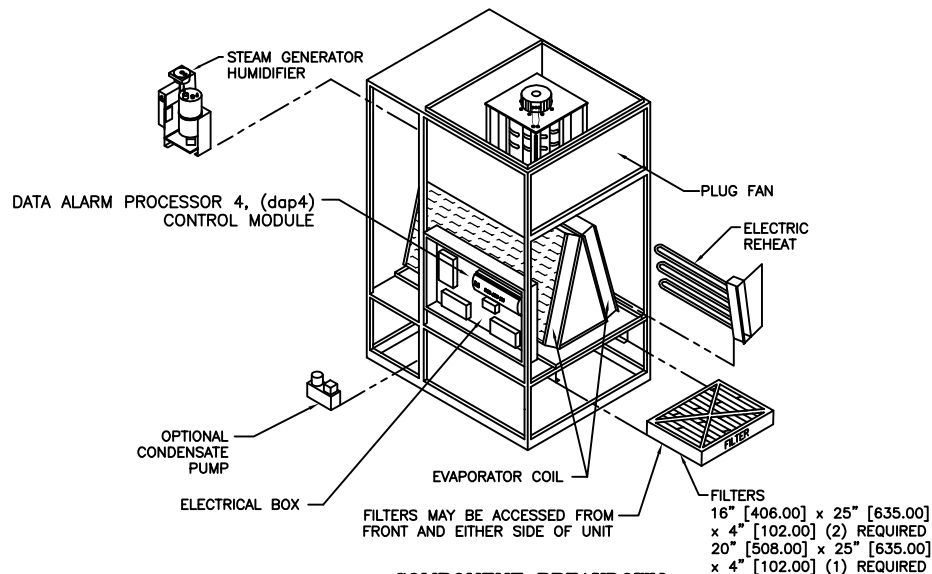
REVISIONS				
REV	DESCRIPTION	DATE	BY	FROM
H	CHANGED HOT GAS LINE TO SUCTION LINE	01-21-16	RRK	HOP



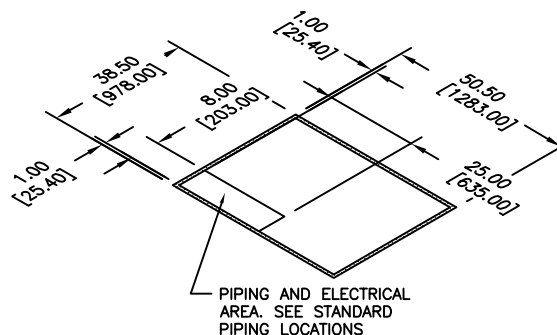
DIMENSIONAL DATA



STANDARD PIPING LOCATIONS



COMPONENT BREAKDOWN



FRAME DIMENSIONS

gForce GT
28-46 KW/DX UPFLOW
WITH CONDENSING UNIT

dataaire

DRAWN BY :	GABE	SCALE: NONE
CHECKED BY :		SH 1 OF 1
DATE :	06-16-2010	REV H

PART OF
560-900-202
DWG NO.