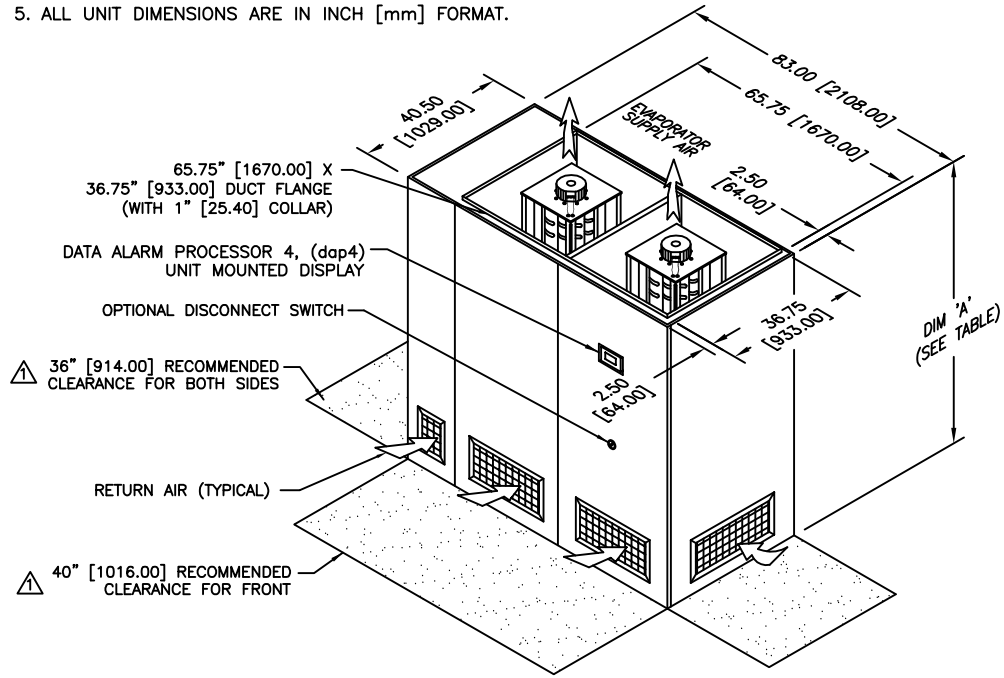


NOTES:

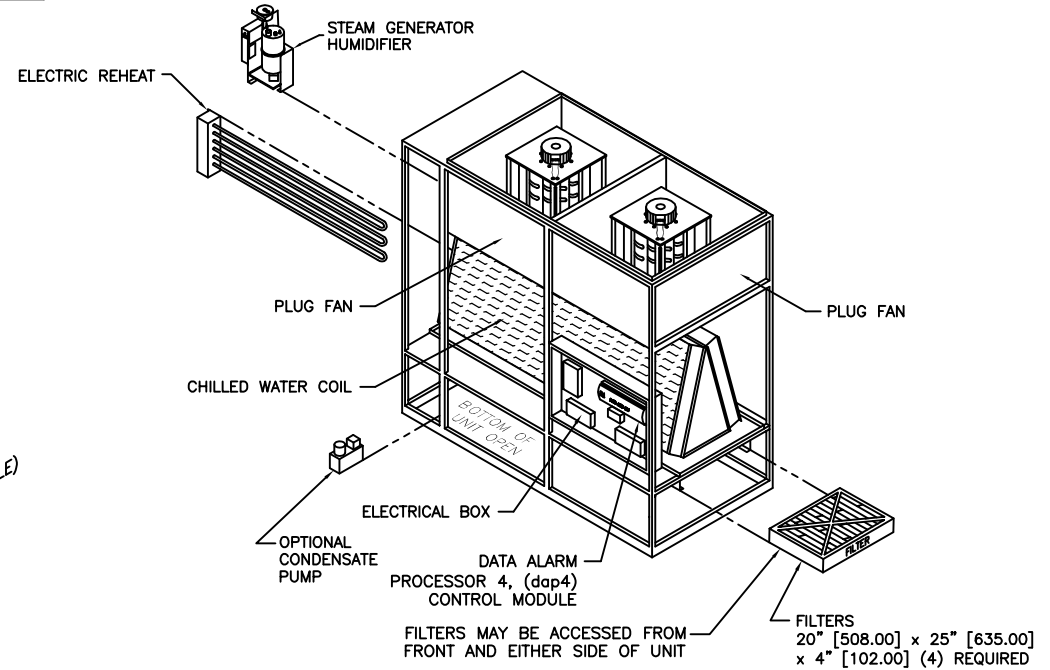
1. DIMENSIONS NOTED ARE THE MINIMUM CLEARANCES REQUIRED BY THE FACTORY. CONSULT LOCAL BUILDING CODES AND NEC FOR ADDITIONAL CLEARANCE REQUIREMENTS.
2. ALL STANDARD PIPING TERMINATES INSIDE OF CABINET. ALL OPTIONAL PIPING (TOP/SIDE) TERMINATES OUTSIDE OF CABINET.
3. NOT ALL COMPONENTS AND OPTIONS ARE SHOWN. LOCATIONS MAY VARY DEPENDING ON OPTIONS.
4. CONNECTION PIPE SIZE IS 1 5/8 [41.00] DIAMETER FOR 53 KW. CONNECTION PIPE SIZE IS 2 1/8 [54.00] DIAMETER FOR 63, 77 & 91 KW.
5. ALL UNIT DIMENSIONS ARE IN INCH [mm] FORMAT.

DIM 'A'		
78.00	[1981.00]	WITH 3KW FAN
84.00	[2134.00]	WITH 5KW FAN

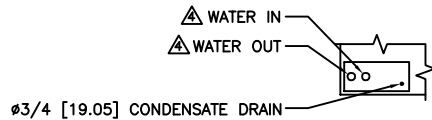
REVISIONS				
REV	DESCRIPTION	DATE	BY	CHKBY
G	UPDATED NOTES & TITLEBLOCK	03-20-15	RRK	DM



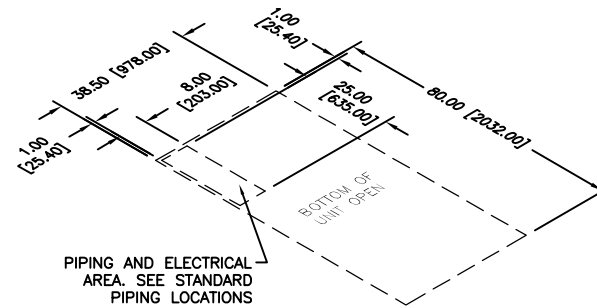
DIMENSIONAL DATA



COMPONENT BREAKDOWN



STANDARD PIPING LOCATIONS



FOOTPRINT LAYOUT
(PIPING & ELECTRICAL AREA REFERENCE)

gForce GF 53, 63, 77 & 91 KW CHILLED WATER UPFLOW			
dataire			
DRAWN BY : GABE		SCALE: NONE	
CHECKED BY :		SH 1 OF 1	
DATE :	06-16-10	REV	G
PART OF			
560-900-402			
DWG NO.			