

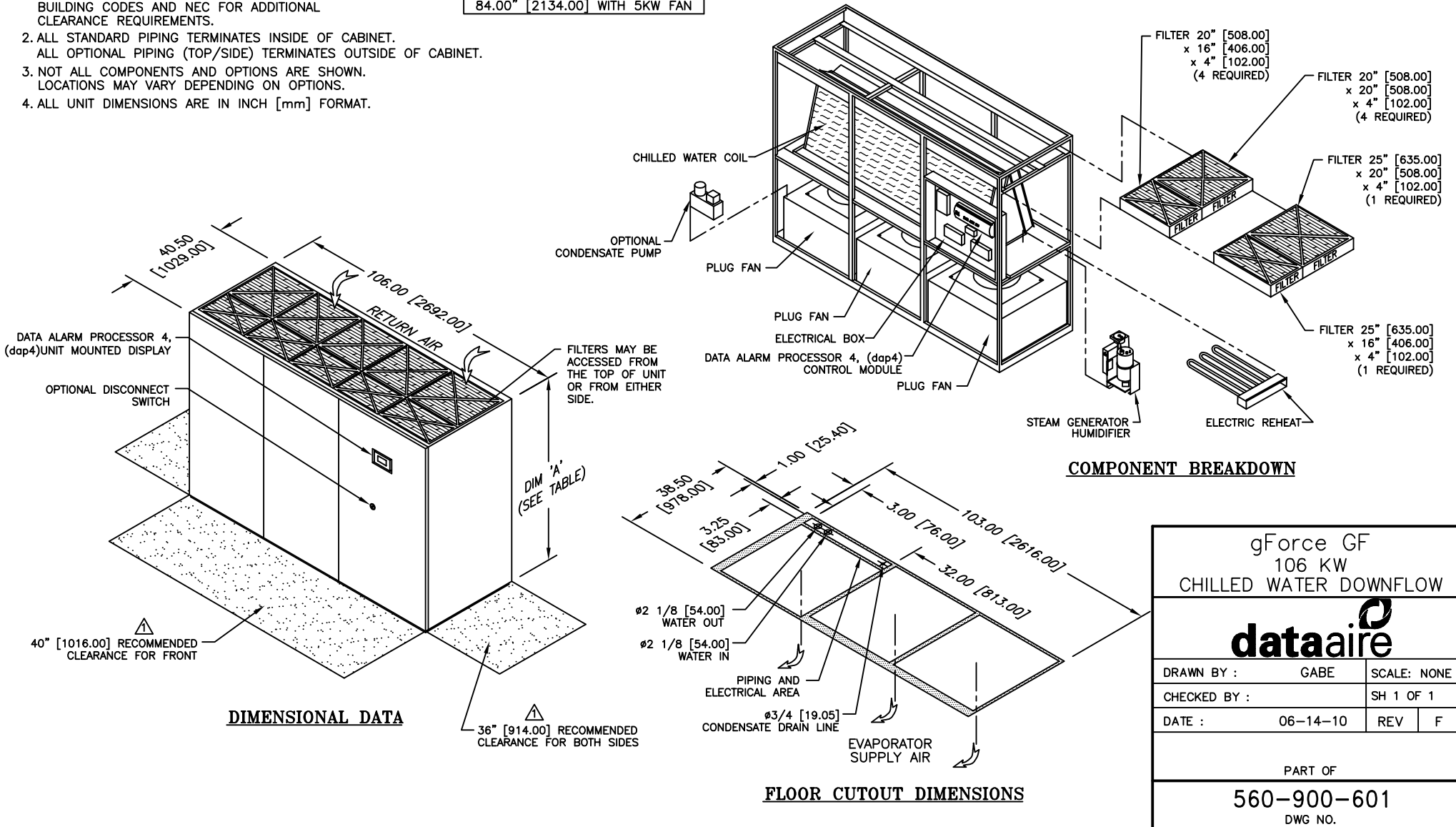
**NOTES:**

⚠ DIMENSIONS NOTED ARE THE MINIMUM CLEARANCES REQUIRED BY THE FACTORY. CONSULT LOCAL BUILDING CODES AND NEC FOR ADDITIONAL CLEARANCE REQUIREMENTS.

2. ALL STANDARD PIPING TERMINATES INSIDE OF CABINET. ALL OPTIONAL PIPING (TOP/SIDE) TERMINATES OUTSIDE OF CABINET.
3. NOT ALL COMPONENTS AND OPTIONS ARE SHOWN. LOCATIONS MAY VARY DEPENDING ON OPTIONS.
4. ALL UNIT DIMENSIONS ARE IN INCH [mm] FORMAT.

DIM 'A'	
78.00" [1981.00]	WITH 3KW FAN
84.00" [2134.00]	WITH 5KW FAN

REVISIONS				
REV	DESCRIPTION	DATE	BY	CHKBY
F	UPDATED PIPING DETAILS	11-23-15	RRK	-



**DIMENSIONAL DATA**

**FLOOR CUTOUT DIMENSIONS**

**COMPONENT BREAKDOWN**

gForce GF 106 KW CHILLED WATER DOWNFLOW	
<b>dataaire</b>	
DRAWN BY :	GABE
CHECKED BY :	SH 1 OF 1
DATE :	06-14-10
REV	F
PART OF	
560-900-601	
DWG NO.	