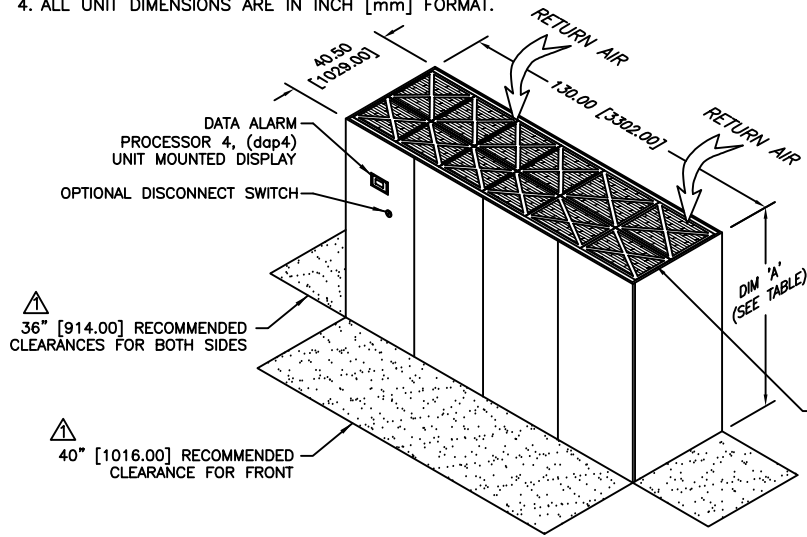


NOTES:

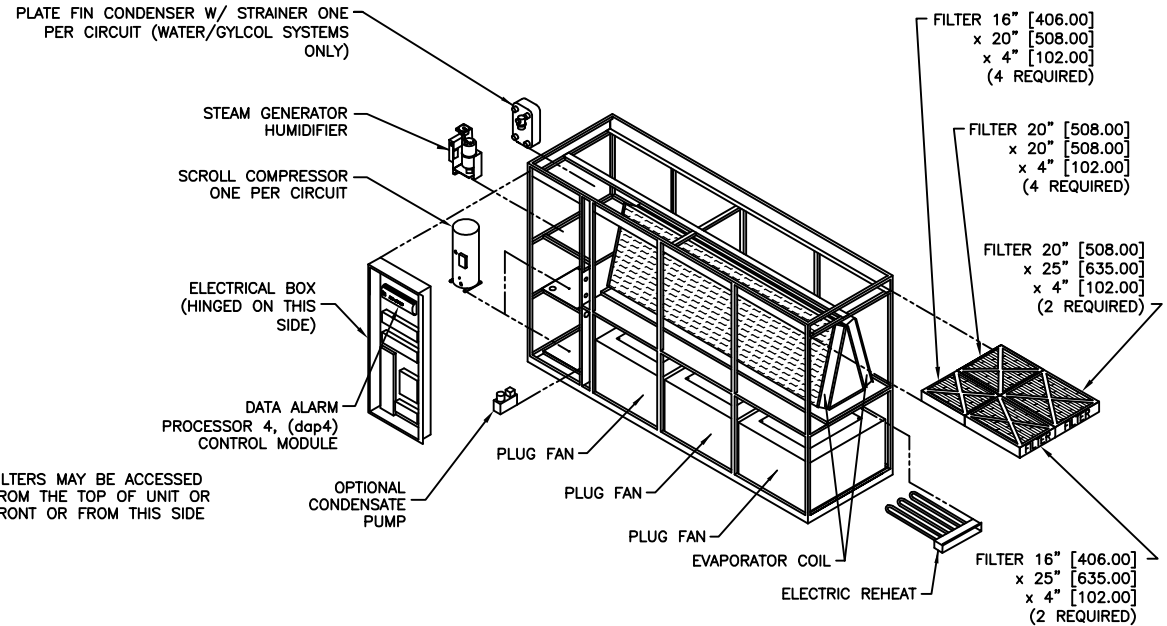
- 1. DIMENSIONS NOTED ARE THE MINIMUM CLEARANCES REQUIRED BY THE FACTORY. CONSULT LOCAL BUILDING CODES AND NEC FOR ADDITIONAL CLEARANCE REQUIREMENTS.
- 2. ALL STANDARD PIPING TERMINATES INSIDE OF CABINET. ALL OPTIONAL PIPING (TOP/SIDE) TERMINATES OUTSIDE OF CABINET.
- 3. NOT ALL COMPONENTS AND OPTIONS ARE SHOWN. LOCATIONS MAY VARY DEPENDING ON OPTIONS.
- 4. ALL UNIT DIMENSIONS ARE IN INCH [mm] FORMAT.

DIM 'A'		
78.00"	[1981.00]	WITH 3KW FAN
84.00"	[2134.00]	WITH 5KW FAN

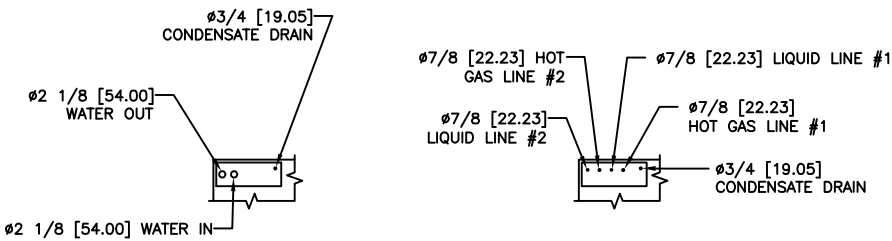
REVISIONS				
REV	DESCRIPTION	DATE	BY	CHKBY
D	UPDATED NOTES & TITLEBLOCK	03-18-15	RRK	GM



DIMENSIONAL DATA



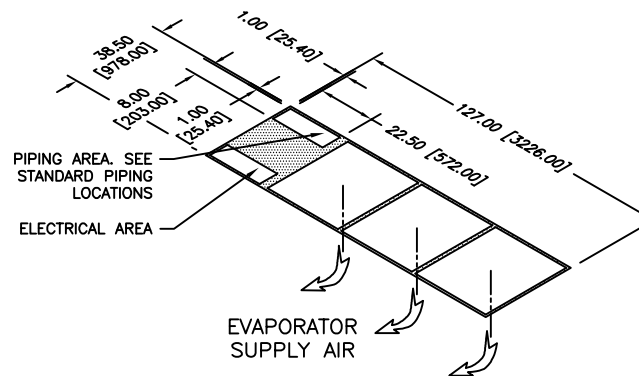
COMPONENT BREAKDOWN



WATER/GLYCOL COOLED

AIR COOLED

STANDARD PIPING LOCATIONS



FLOOR CUTOUT DIMENSIONS

gForce GF 106 KW DX DOWNFLOW			
dataaire			
DRAWN BY : GABE		SCALE: NONE	
CHECKED BY :		SH 1 OF 1	
DATE : 06-14-2014		REV	D
PART OF			
560-900-801			
DWG NO.			