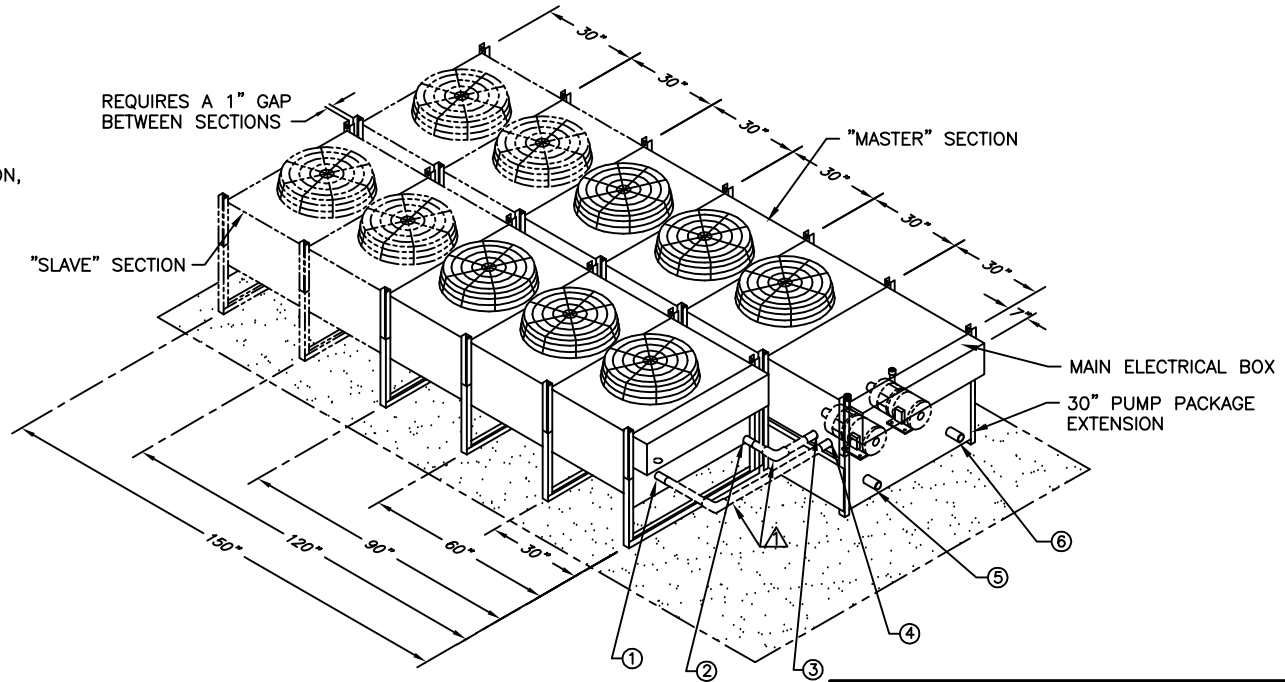


NOTES:

- 1. CONNECTION BETWEEN SECTIONS, FACTORY PROVIDED FIELD PIPED.
- 2. A DOUBLE WIDE FLUID COOLER SHIPS AS TWO EQUALLY SIZED SECTIONS THAT MUST BE MOUNTED SIDE BY SIDE AND RE-CONNECTED UPON INSTALLATION. THE PIPING CAN BE JOINED USING A FACTORY PROVIDED MANIFOLD KIT. A SINGLE SOURCE OF LINE VOLTAGE POWER IS REQUIRED. THE SECTION ON THE RIGHT HAS A COMPLETE ELECTRICAL BOX. THE OTHER HAS AN ELECTRICAL BOX THAT ONLY HAS A TERMINAL BLOCK. WIRING MUST BE FIELD CONNECTED BETWEEN THE ELECTRICAL BOX OF THE RIGHT SECTION TO THE ELECTRICAL BOX ON THE LEFT. FANS WILL CYCLE IN BANKS OF TWO. REFER TO LOCAL ELECTRICAL CODES. LOW DECIBEL FLUID COOLERS HAVE "LD" AT THE END OF MODEL NUMBERS.
- 3. UNIT WEIGHT IS AN ESTIMATED UNCRATED WEIGHT.
- 4. TOTAL LENGTH IS INCLUSIVE OF FAN LENGTH, PUMP PACKAGE EXTENSION, AND ELECTRICAL BOX.

REVISIONS				
REV	DESCRIPTION	DATE	BY	CHKBY
A	REVISED AND REDRAWN	05-06-15	JAP	JB



- ① = SLAVE SECTION WATER OUT 2-5/8" O.D. CU STUB
- ② = SLAVE SECTION WATER IN 2-5/8" O.D. CU STUB
- ③ = MASTER SECTION TO SLAVE WATER IN CONNECTION 2-5/8" O.D. CU STUB
- ④ = MASTER SECTION TO SLAVE WATER OUT CONNECTION 2-5/8" O.D. CU STUB
- ⑤ = MAIN WATER OUT CONNECTION 3-1/8" O.D. CU STUB
- ⑥ = MAIN WATER IN CONNECTION 3-1/8" O.D. CU STUB

MODEL NUMBER	TOTAL LENGTH	UNIT NET WEIGHT	QTY MOTORS	STANDARD FLUID COOLER			LOW DECIBEL FLUID COOLER		
				H.P.	RPM	TOTAL CFM	H.P.	RPM	TOTAL CFM
DAFC 57	129-1/4"	1330	6	3/4	1075	29,500	1/2	850	23,600
DAFC 61	159-1/4"	1490	8	3/4	1075	40,000	1/2	850	32,000
DAFC 75	159-1/4"	1690	8	3/4	1075	39,000	1/2	850	31,200
DAFC 80	159-1/4"	2200	8	3/4	1075	38,000	1/2	850	30,400
DAFC 88	189-1/4"	2920	10	3/4	1075	49,000	1/2	850	39,200
DAFC 100	189-1/4"	3120	10	3/4	1075	48,000	1/2	850	38,400

DAFC 57-100 TON DOUBLE WIDE FLUID COOLER WITH INTEGRAL DUAL PUMP PACKAGE



DRAWN BY : GW BARKER SCALE: NONE
 CHECKED BY : D. WILSON SH 1 OF 1
 DATE : 11-18-2008 REV A

PART OF

600-000-483
 DWG NO.