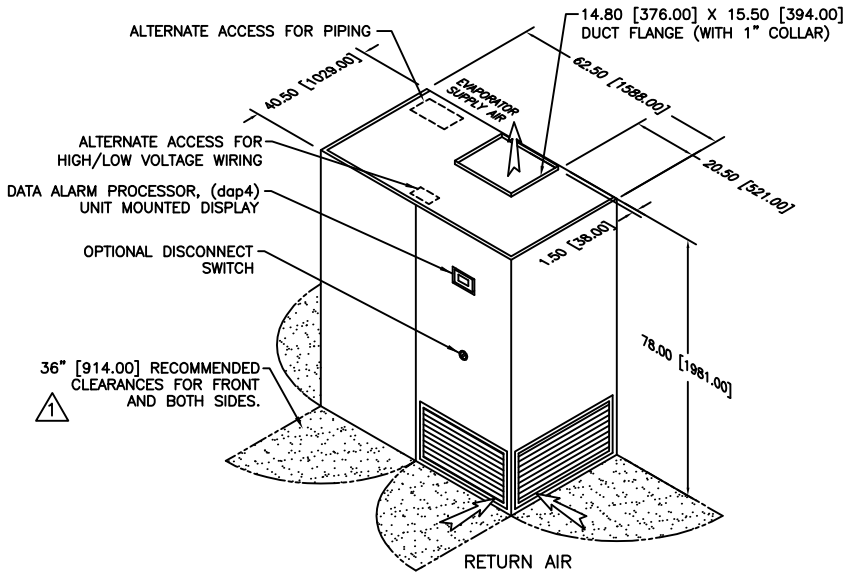


**NOTES:**

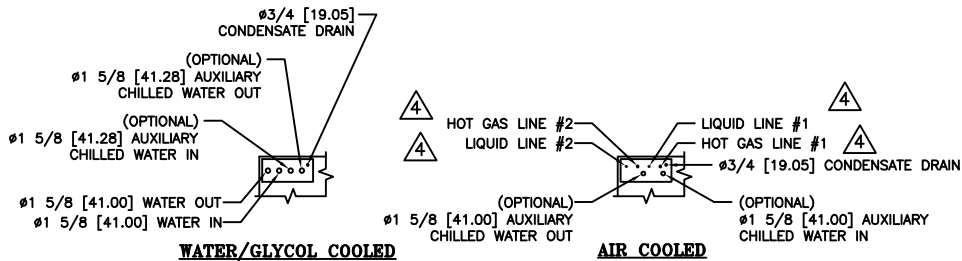
- 1. DIMENSIONS NOTED ARE THE MINIMUM CLEARANCES REQUIRED BY THE FACTORY. CONSULT LOCAL BUILDING CODES AND NEC FOR ADDITIONAL CLEARANCE REQUIREMENTS.
- 2. ALL STANDARD PIPING TERMINATES INSIDE OF CABINET. ALL OPTIONAL PIPING (TOP/SIDE) TERMINATES OUTSIDE THE CABINET.
- 3. ALL COMPONENTS AND OPTIONS ARE NOT SHOWN.
- 4. SEE TABLE FOR CONNECTION PIPE SIZES.
- 5. ALL DIMENSIONS ARE IN INCH[mm] FORMAT.

	CONNECTION PIPE SIZE (ø)					
UNIT (TON)	6		8		10	
LIQUID	1/2	[12.70]	1/2	[12.70]	1/2	[12.70]
HOT GAS	1/2	[12.70]	5/8	[15.88]	5/8	[15.88]

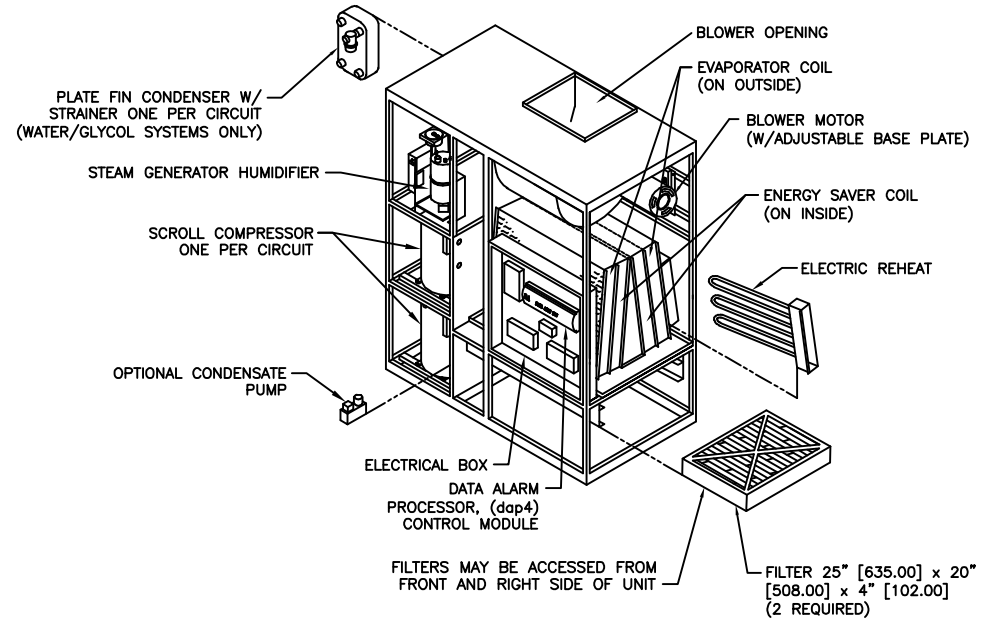
REVISIONS					
REV	DESCRIPTION	DATE	BY	CKBY	
E	REMOVED NOTE FOR TOP PIPING OPENINGS	01-19-21	AP	BM	



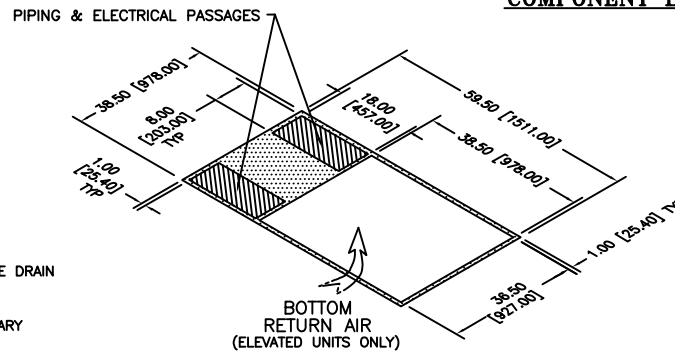
**DIMENSIONAL DATA**



**STANDARD PIPING LOCATIONS**



**COMPONENT BREAKDOWN**



**FLOOR CUTOUT DIMENSIONS**

DATA AIRE 6, 8, & 10 TON UPFLOW DIRECT EXPANSION WITH ENERGY SAVER COIL



DRAWN BY :	J. PERKINS	SCALE: NONE
CHECKED BY :		SH 1 OF 1
DATE :	06-13-2013	REV E

PART OF

550-900-533  
DWG NO.