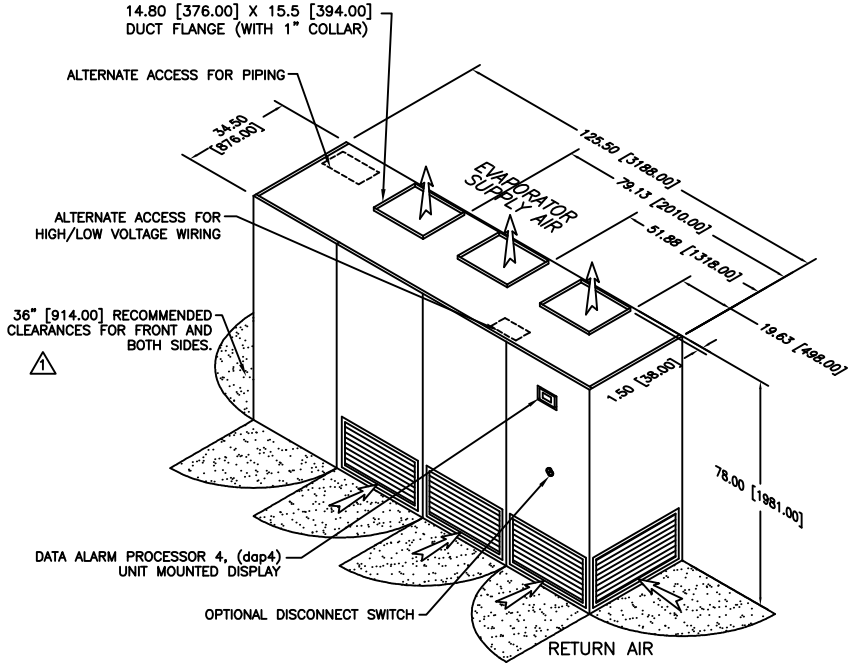
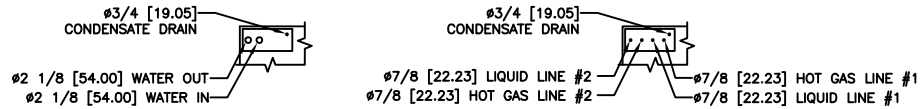


**NOTES:**

1. DIMENSIONS NOTED ARE THE MINIMUM CLEARANCES REQUIRED BY THE FACTORY. CONSULT LOCAL BUILDING CODES AND NEC FOR ADDITIONAL CLEARANCE REQUIREMENTS.
2. ALL STANDARD PIPING TERMINATES INSIDE OF CABINET. ALL OPTIONAL PIPING (TOP/SIDE) TERMINATES OUTSIDE OF CABINET.
3. ALL COMPONENTS AND OPTIONS ARE NOT SHOWN.
4. ALL UNIT DIMENSIONS ARE IN INCH [mm] FORMAT.
5. CONDENSATE DRAIN LINE NOT PROVIDED WITH PUMP.

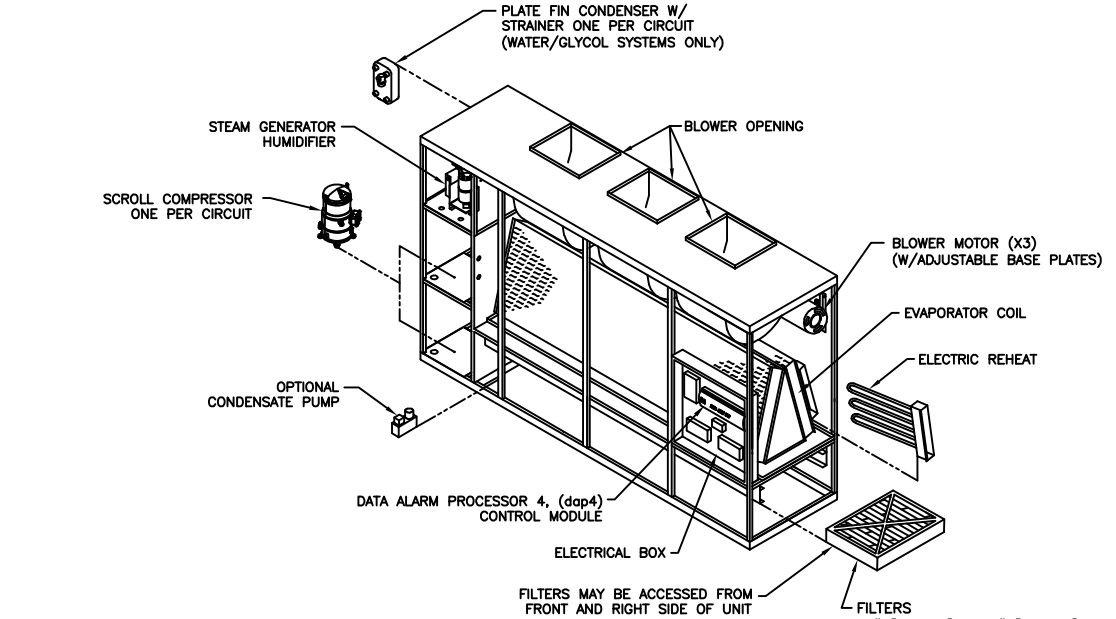


**DIMENSIONAL DATA**



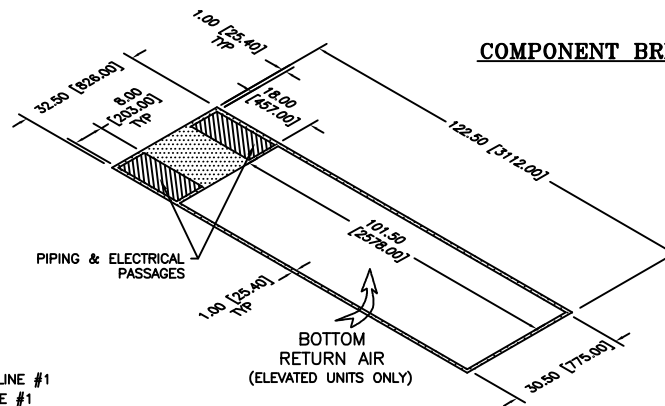
**WATER/GLYCOL COOLED  
STANDARD PIPING LOCATIONS**

**AIR COOLED**



**COMPONENT BREAKDOWN**

FILTERS  
 16" [406.00] x 25" [635.00]  
 x 4" [102.00] (5) REQUIRED  
 20" [508.00] x 25" [635.00]  
 x 4" [102.00] (1) REQUIRED



**FLOOR CUTOUT DIMENSIONS**

REVISIONS				
REV	DESCRIPTION	DATE	BY	CKBY
G	REMOVED NOTE FOR TOP PIPING OPENINGS	01-19-21	AP	BM

DATA AIRE  
 30 TON UNITS  
 UPFLOW DIRECT EXPANSION



DRAWN BY :	J. PERKINS	SCALE: NONE
CHECKED BY :		SH 1 OF 1
DATE :	06-27-2013	REV G

PART OF

550-900-547  
 DWG NO.