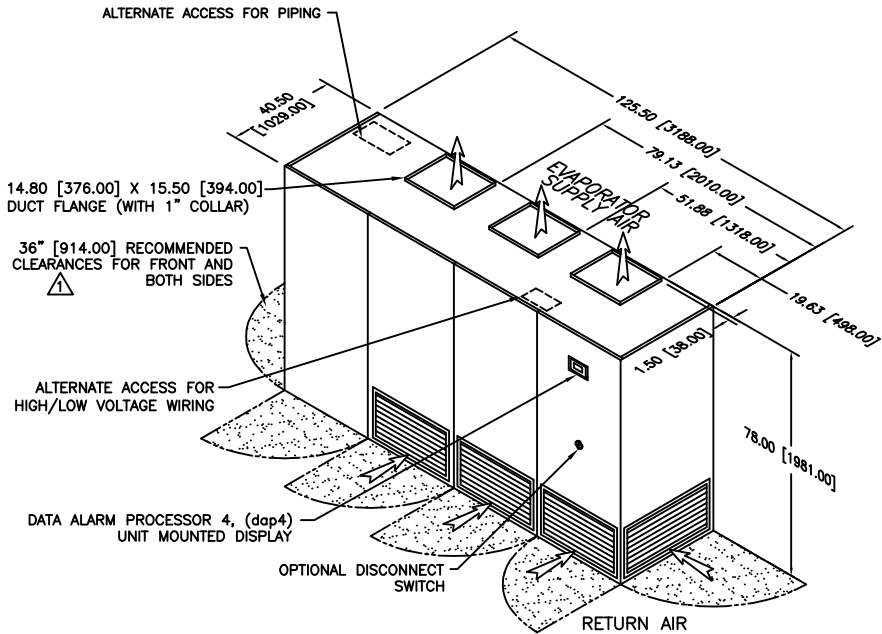


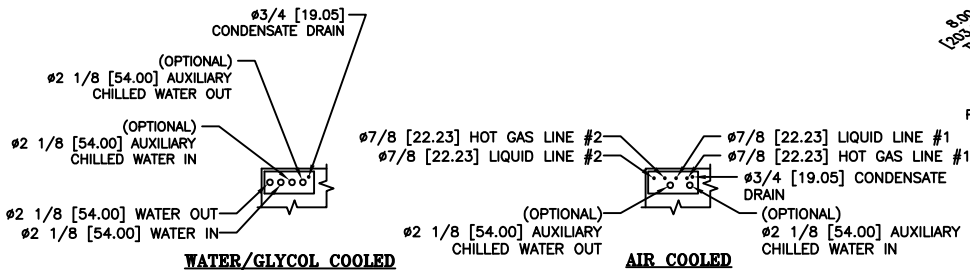
NOTES:

△ DIMENSIONS NOTED ARE THE MINIMUM CLEARANCES REQUIRED BY THE FACTORY. CONSULT LOCAL BUILDING CODES AND NEC FOR ADDITIONAL CLEARANCE REQUIREMENTS.

2. ALL STANDARD PIPING TERMINATES INSIDE OF CABINET. ALL OPTIONAL PIPING (TOP/SIDE) TERMINATES OUTSIDE OF CABINET.
3. ALL COMPONENTS AND OPTIONS ARE NOT SHOWN.
4. ALL UNIT DIMENSIONS ARE IN INCH [mm] FORMAT.
5. CONDENSATE DRAIN LINE NOT PROVIDED WITH PUMP.

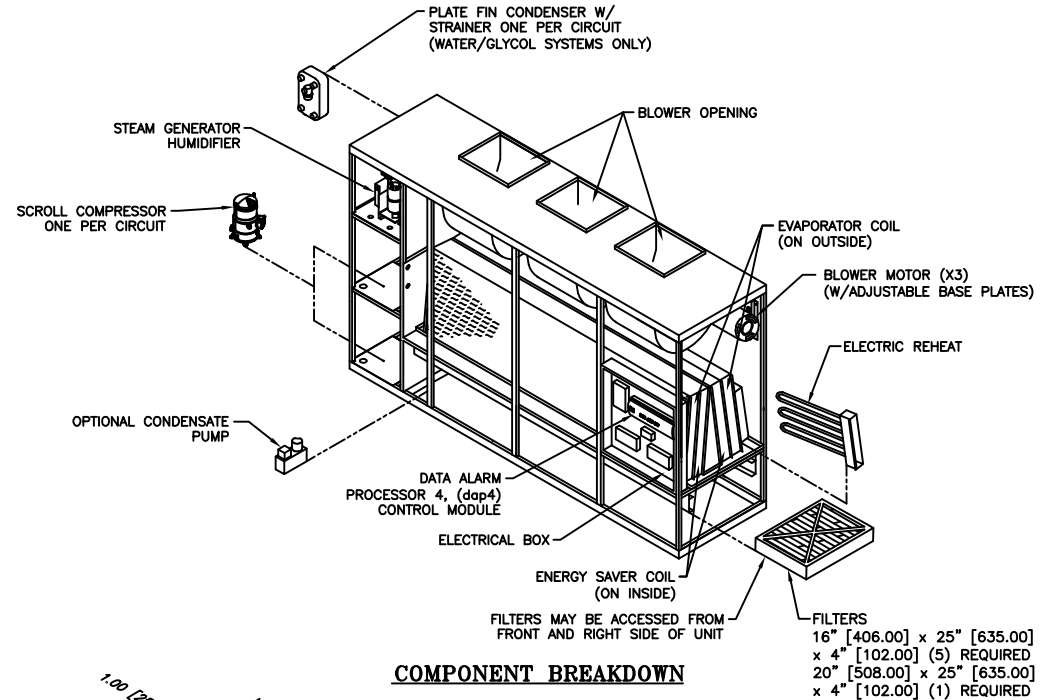


DIMENSIONAL DATA

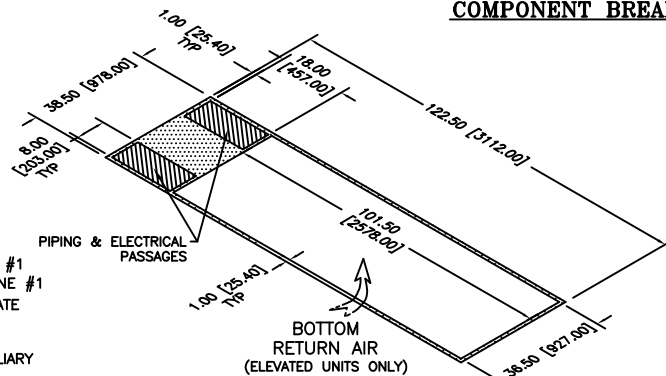


STANDARD PIPING LOCATIONS

REVISIONS				
REV	DESCRIPTION	DATE	BY	CKBY
G	REMOVED NOTE FOR TOP PIPING OPENINGS	01-19-21	AP	BM



COMPONENT BREAKDOWN



FLOOR CUTOUT DIMENSIONS

DATA AIRE 30 TON UNITS
UPFLOW DIRECT EXPANSION
WITH ES OR AUX CW COIL



DRAWN BY :	J. PERKINS	SCALE: NONE
CHECKED BY :		SH 1 OF 1
DATE :	07-02-2013	REV G

PART OF

550-900-548
DWG NO.