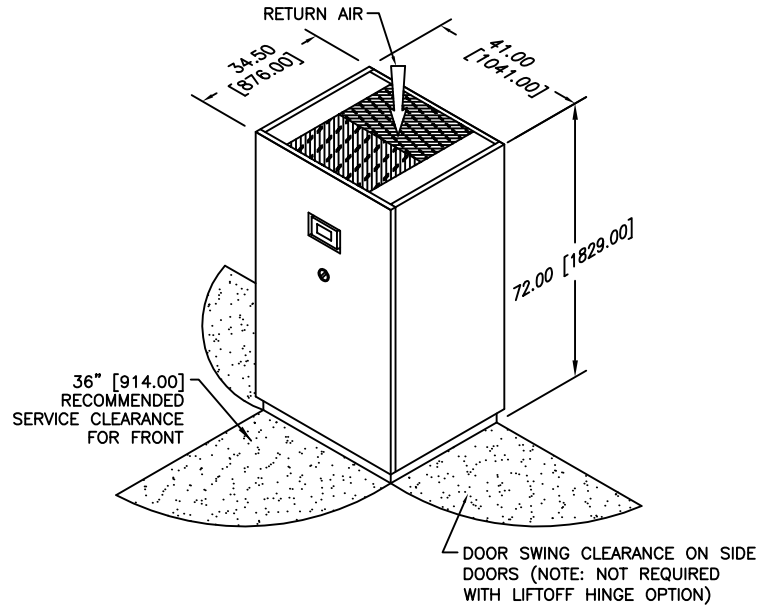


NOTES:

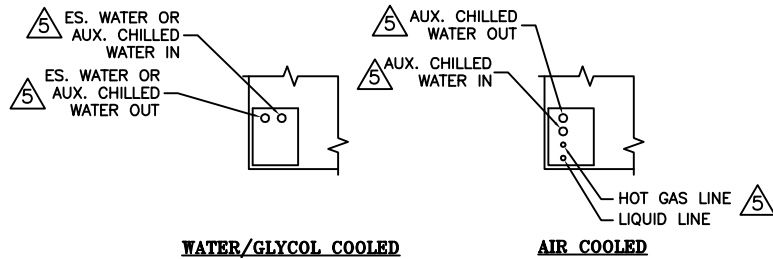
- 1. DIMENSIONS NOTED ARE THE MINIMUM CLEARANCES REQUIRED BY THE FACTORY, CONSULT LOCAL BUILDING CODES AND NEC FOR ADDITIONAL CLEARANCE REQUIREMENTS.
- 2. ALL STANDARD PIPING TERMINATES INSIDE OF CABINET. ALL OPTIONAL PIPING (TOP/SIDE) TERMINATES OUTSIDE OF CABINET.
- 3. NOT ALL COMPONENTS AND OPTIONS ARE SHOWN.
- 4. ALL DIMENSIONS ARE IN INCH [mm] FORMAT.
- 5. SEE TABLE FOR CONNECTION PIPE SIZES.

UNIT (TON)	CONNECTION PIPE SIZE (Ø)			
	2	3	4	5
LIQUID/HOT GAS (AIR COOLED)	1/2 [12.70]	1/2 [12.70]	1/2 [12.70]	1/2 [12.70]
SUPPLY/RETURN (WATER/GLYCOL)	3/4 [19.05]	3/4 [19.05]	1 1/8 [29.00]	1 1/8 [29.00]
AUXILIARY CHILLED WATER	1 1/8 [29.00]	1 1/8 [29.00]	1 1/8 [29.00]	1 1/8 [29.00]

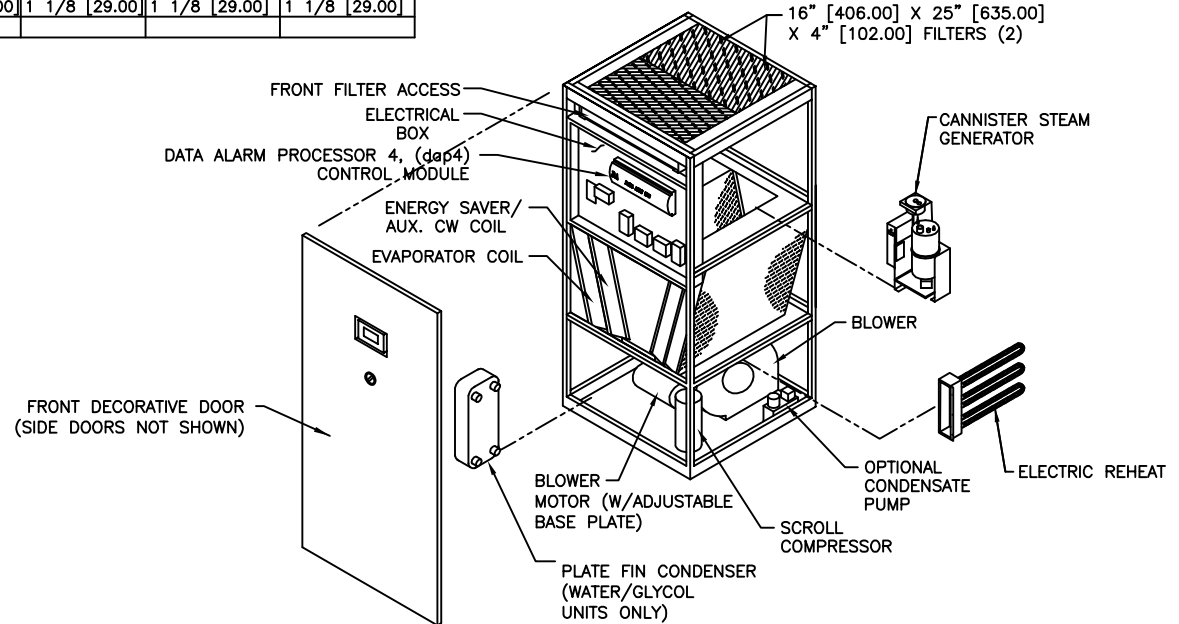
REVISIONS			
REV	DESCRIPTION	DATE	BY
F	UPDATED PIPING DETAILS	11-19-15	RRK



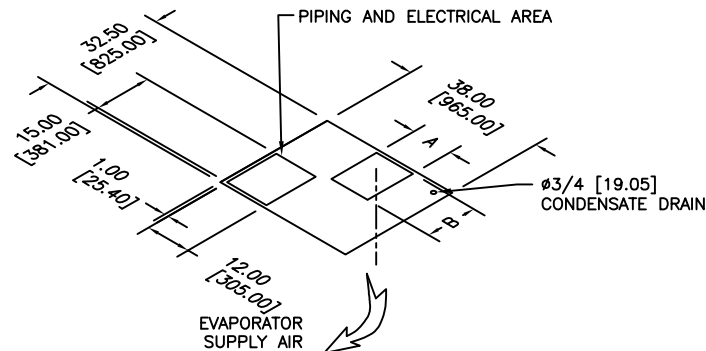
DIMENSIONAL DATA



STANDARD PIPING LOCATIONS



COMPONENT BREAKDOWN



FLOOR CUTOUT DIMENSIONS

MODEL	"A"	"B"
2-3 TON	10.63 [270.00]	11.50 [292.00]
4-5 TON	10.88 [276.00]	13.63 [347.00]

2-5 TON DATA TEMP DX
DOWNFLOW W/ ENERGY SAVER
/AUX. CHILLED WATER COIL

dataaire

DRAWN BY : G. SALDIVAR SCALE: NONE
 CHECKED BY : SH 1 OF 1
 DATE : 11-09-2006 REV F

PART OF
555-900-005
 DWG NO.