

NOTES:

1. DIMENSIONS NOTED ARE THE MINIMUM CLEARANCES REQUIRED BY THE FACTORY. CONSULT LOCAL BUILDING CODES AND NEC FOR ADDITIONAL CLEARANCE REQUIREMENTS.

2. ALL STANDARD PIPING TERMINATES INSIDE OF CABINET. ALL OPTIONAL PIPING (TOP/SIDE) TERMINATES OUTSIDE OF CABINET.

3. NOT ALL COMPONENTS AND OPTIONS ARE SHOWN. LOCATIONS MAY VARY DEPENDING ON OPTIONS.

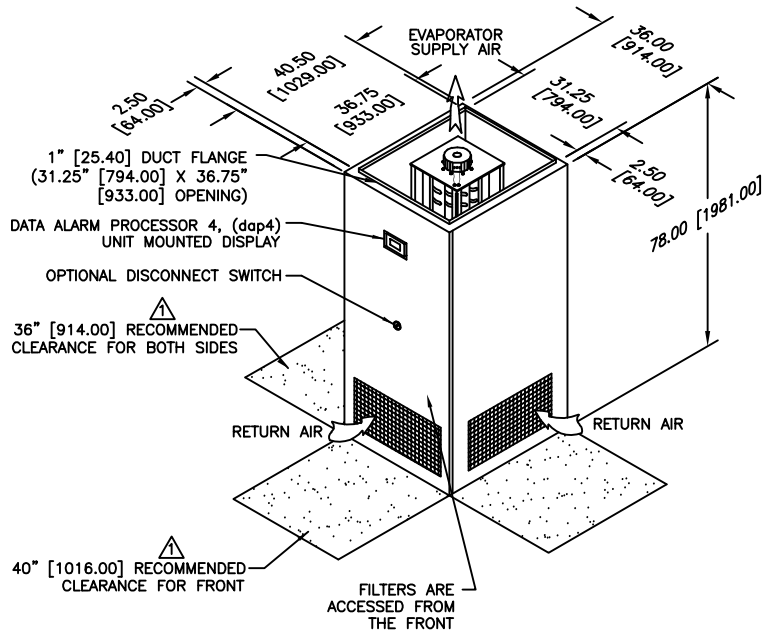
4. ALL UNIT DIMENSIONS ARE IN INCH [mm] FORMAT.

5. SEE TABLE FOR CONNECTION PIPE SIZES.

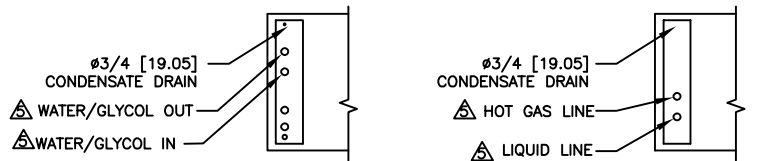
| UNIT (KW) | CONNECTION PIPE SIZE (ø) | | | | | | | |
|-----------|--------------------------|---------|-----|---------|-------|---------|-------|---------|
| | 07 | | 11 | | 14 | | 18 | |
| LIQUID | 1/2 | [12.70] | 1/2 | [12.70] | 1/2 | [12.70] | 1/2 | [12.70] |
| HOT GAS | 1/2 | [12.70] | 1/2 | [12.70] | 1/2 | [12.70] | 1/2 | [12.70] |
| WATER IN | 3/4 | [19.05] | 3/4 | [19.05] | 1-1/8 | [29.00] | 1-1/8 | [29.00] |
| WATER OUT | 3/4 | [19.05] | 3/4 | [19.05] | 1-1/8 | [29.00] | 1-1/8 | [29.00] |

REVISIONS

| REV | DESCRIPTION | DATE | BY |
|-----|--------------------------------------|----------|----|
| J | RELOCATED PIPING AND ELECTRICAL AREA | 05-28-19 | RV |



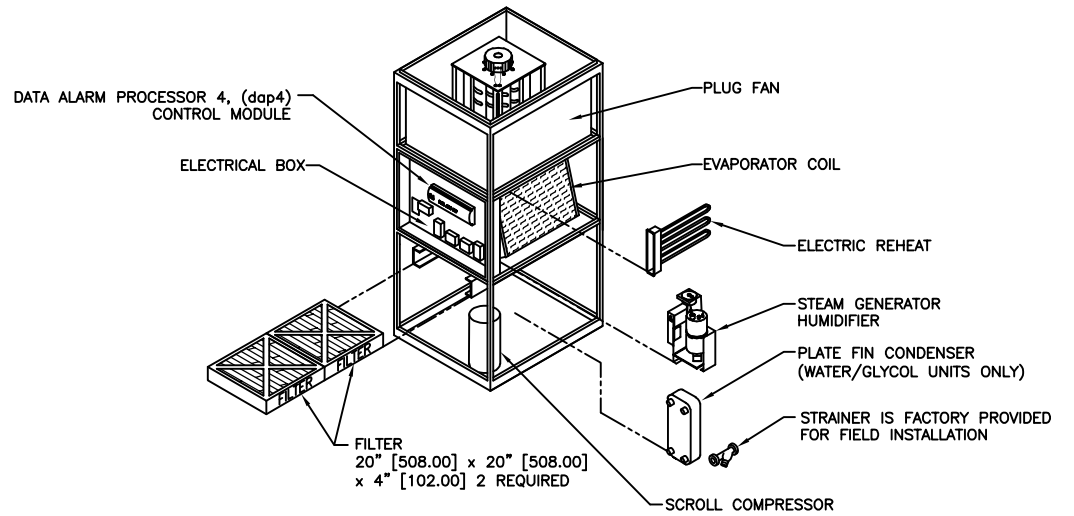
DIMENSIONAL DATA



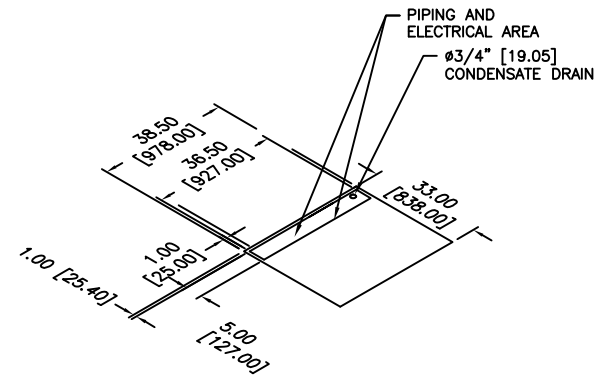
WATER/GLYCOL COOLED

AIR COOLED

STANDARD PIPING LOCATIONS



COMPONENT BREAKDOWN



FLOOR CUTOUT DIMENSIONS

gForce GT
7, 11, 14 & 18 KW
DX UPFLOW
WITH A-TYPE COIL



| | | |
|--------------|----------|-------------|
| DRAWN BY : | GABE | SCALE: NONE |
| CHECKED BY : | | SH 1 OF 1 |
| DATE : | 06-16-10 | REV J |

PART OF

560-900-004
DWG NO.