

NOTES:

1. DIMENSIONS NOTED ARE THE MINIMUM CLEARANCES REQUIRED BY THE FACTORY. CONSULT LOCAL BUILDING CODES AND NEC FOR ADDITIONAL CLEARANCE REQUIREMENTS.

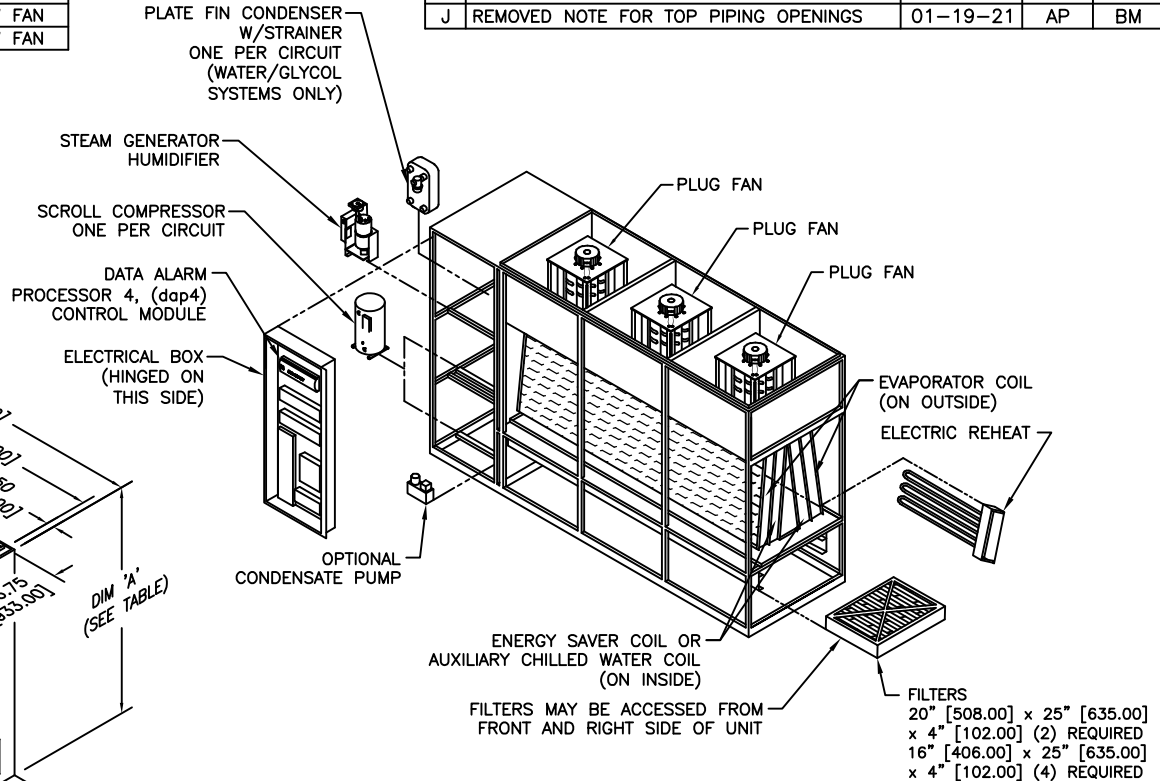
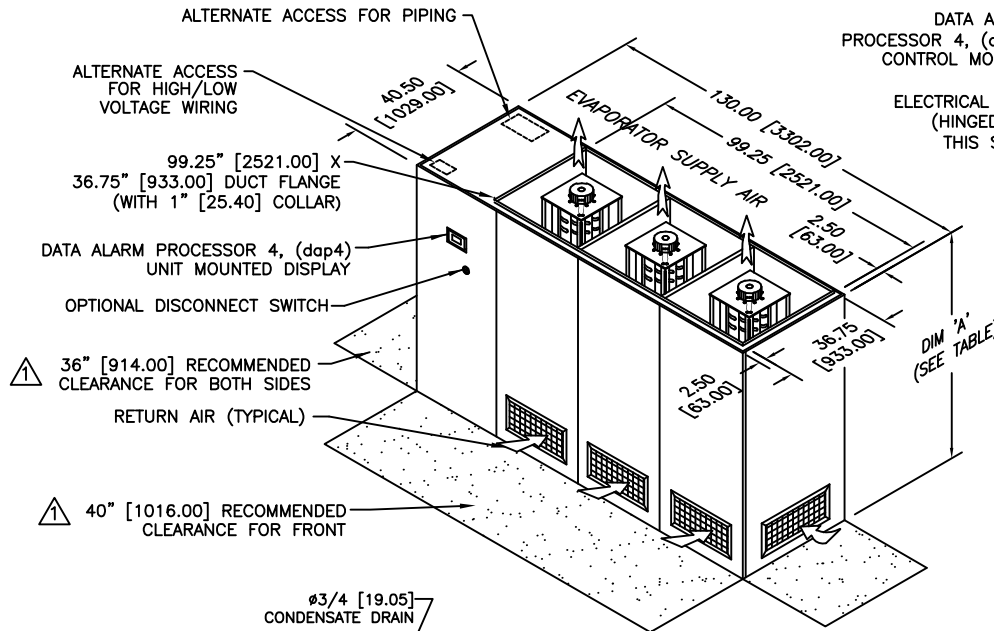
2. ALL STANDARD PIPING TERMINATES INSIDE OF CABINET. ALL OPTIONAL PIPING (TOP/SIDE) TERMINATES OUTSIDE OF CABINET.

3. NOT ALL COMPONENTS AND OPTIONS ARE SHOWN. LOCATIONS MAY VARY DEPENDING ON OPTIONS.

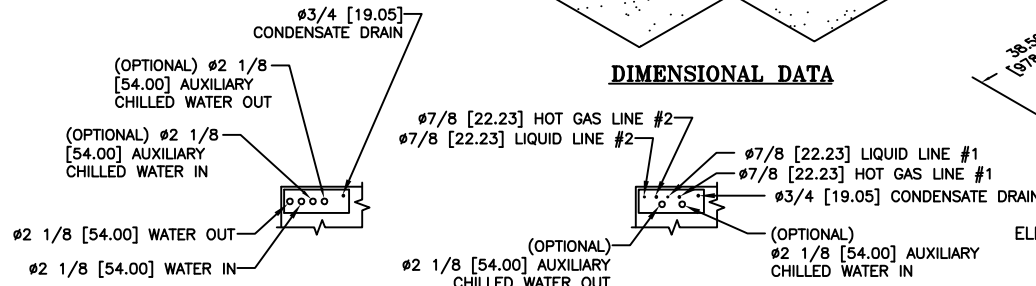
4. ALL UNIT DIMENSIONS ARE IN INCH [mm] FORMAT.

DIM 'A'		
78.00	[1981.00]	WITH 3KW FAN
84.00	[2134.00]	WITH 5KW FAN

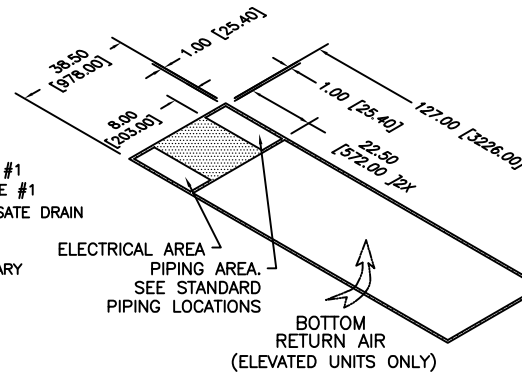
REVISIONS				
REV	DESCRIPTION	DATE	BY	FROM
J	REMOVED NOTE FOR TOP PIPING OPENINGS	01-19-21	AP	BM



COMPONENT BREAKDOWN



STANDARD PIPING LOCATIONS



FLOOR CUTOUT DIMENSIONS

gForce GF
106 KW
DX UPFLOW W/ENERGY SAVER OR
AUXILIARY CHILLED WATER COIL



DRAWN BY :	GABE	SCALE: NONE
CHECKED BY :		SH 1 OF 1
DATE :	06-16-10	REV J

PART OF

560-900-804

DWG NO.