

NOTES:

- △ DIMENSION "C" IS TOTAL HEIGHT SPECIFIED ON ORDER AND SHOULD EQUAL HEIGHT FROM BUILDING FLOOR TO RAISED FLOOR. THE STAND WILL BE BUILT 2 INCHES LESS THAN SPECIFIED AND HAVE ADJUSTABLE LEGS TO PROVIDE +2/-1 INCHES FROM THE SPECIFIED HEIGHT.
- △ SPECIFIED HEIGHT MUST BE BETWEEN 12 AND 24 INCHES IN 2 INCH INCREMENTS (12, 14, 16, 18, 20, 22, 24).
- 3. DOWNFLOW UNITS USING FLOORSTANDS OR JACKSTANDS ARE SUBJECTED TO ADDITIONAL STATIC PRESSURE LOSSES, DEPENDING ON THE AIRFLOW AND STAND HEIGHT. THE NEXT SIZE MOTOR OPTION MAY BE REQUIRED ON SOME FLOOR HEIGHTS.
- 4. 1 1/2 X 1 1/2 X 1/8 ANGLE FRAME CONSTRUCTION.
- △ INNER VERTICAL SUPPORTS AND ADJUSTABLE LEG PLACEMENT, WILL VARY BASED ON THE UNIT SIZE AND WEIGHT.
- △ VIBRATION ISOLATION PADS ARE OPTIONAL.
- △ DEPTH OF DATA AIRE UNITS WITH OPTIONAL ENERGY SAVER OR AUXILIARY CHILLED WATER COIL INCREASES TO 38.50".

| REVISIONS | | | | |
|-----------|------------------------------|----------|----|------|
| REV | DESCRIPTION | DATE | BY | FROM |
| F | UPDATED BOX DIMENSIONS CHART | 08-14-19 | DO | AR |

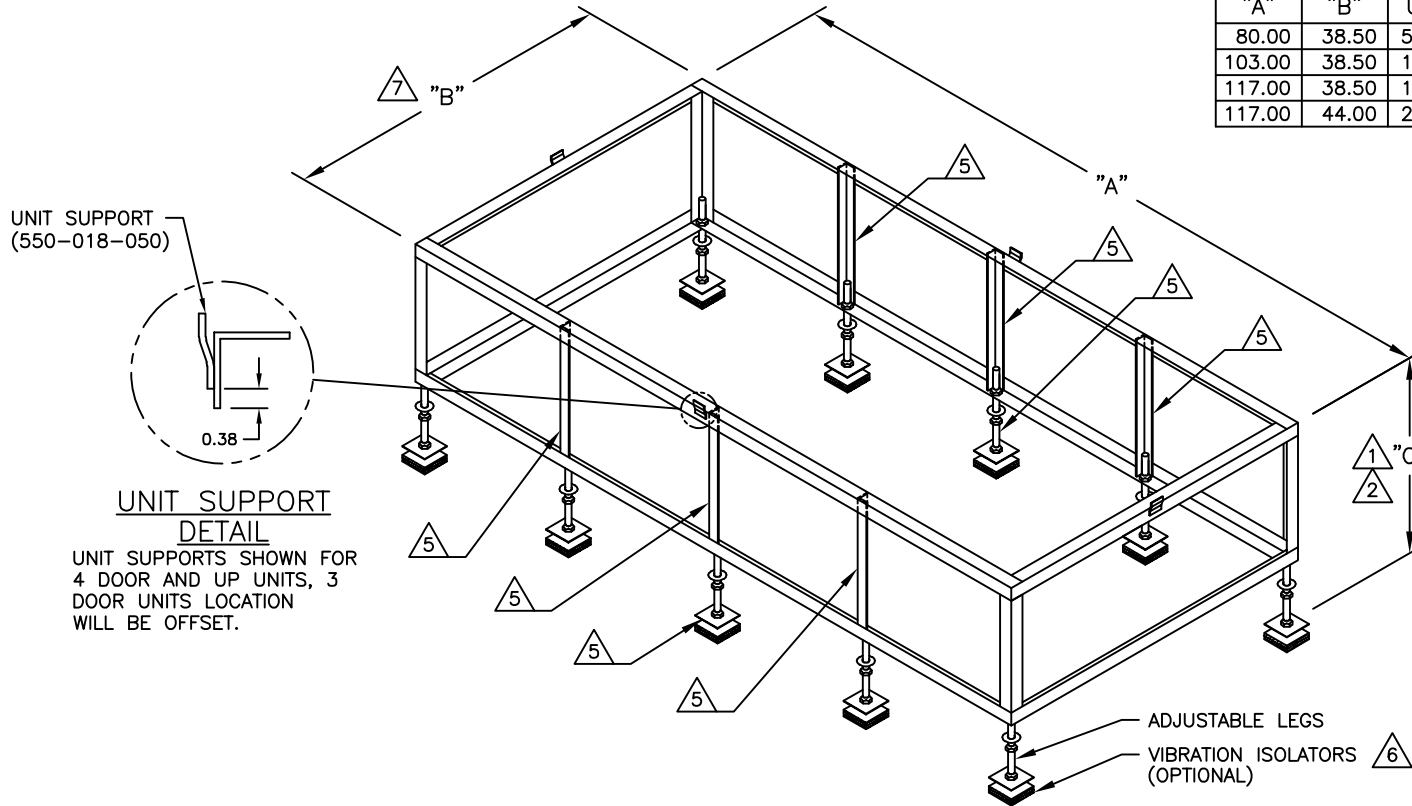
| DATA AIRE CHILLED WATER UNITS | | |
|-------------------------------|-------|-----------------|
| "A" | "B" | UNIT SIZE (TON) |
| 40.50 | 32.50 | 7, 9, 11, 13 |
| 72.00 | 32.50 | 15, 18, 22, 26 |
| 91.00 | 32.50 | 30 (DOWNFLOW) |
| 103.50 | 32.50 | 30 (UPFLOW) |
| 122.50 | 32.50 | 40, 45, 50 |

| DATA AIRE DX UNITS | | |
|--------------------|-------|-----------------|
| "A" | "B" | UNIT SIZE (TON) |
| 59.50 | 32.50 | 6, 8, 10 |
| 72.00 | 32.50 | 13 |
| 91.00 | 32.50 | 16, 20, 26 |
| 122.50 | 32.50 | 30 |

| gForce CHILLED WATER UNITS | | |
|----------------------------|-------|----------------|
| "A" | "B" | UNIT SIZE (KW) |
| 80.00 | 38.50 | 53, 63, 77, 91 |
| 103.00 | 38.50 | 106 |
| 117.00 | 38.50 | 141, 158, 176 |
| 117.00 | 44.00 | 211 |


| gForce DX UNITS | | |
|-----------------|-------|----------------|
| "A" | "B" | UNIT SIZE (KW) |
| 69.50 | 38.50 | 21, 28, 35 |
| 69.50 | 38.50 | 46 |
| 97.00 | 38.50 | 56, 70, 91 |
| 127.00 | 38.50 | 106 |

| gForce ULTRA DX UNITS | | |
|-----------------------|-------|----------------|
| "A" | "B" | UNIT SIZE (KW) |
| 50.50 | 38.50 | 22 |
| 69.50 | 38.50 | 36, 45 |
| 103.00 | 38.50 | 70, 91 |
| 136.50 | 38.50 | 125 |



**UNIT SUPPORT
DETAIL**

UNIT SUPPORTS SHOWN FOR 4 DOOR AND UP UNITS, 3 DOOR UNITS LOCATION WILL BE OFFSET.

| | | | |
|---|--|-------------|---|
| FLOORSTAND FOR gForce & DATA AIRE DX & CHILLED WATER UNITS | | | |
|  | | | |
| DRAWN BY : J. PATTON | | SCALE: NONE | |
| CHECKED BY : | | SH 1 OF 1 | |
| DATE : 06-14-2010 | | REV | F |
| PART OF | | | |
| 560-918-001 DWG NO. | | | |