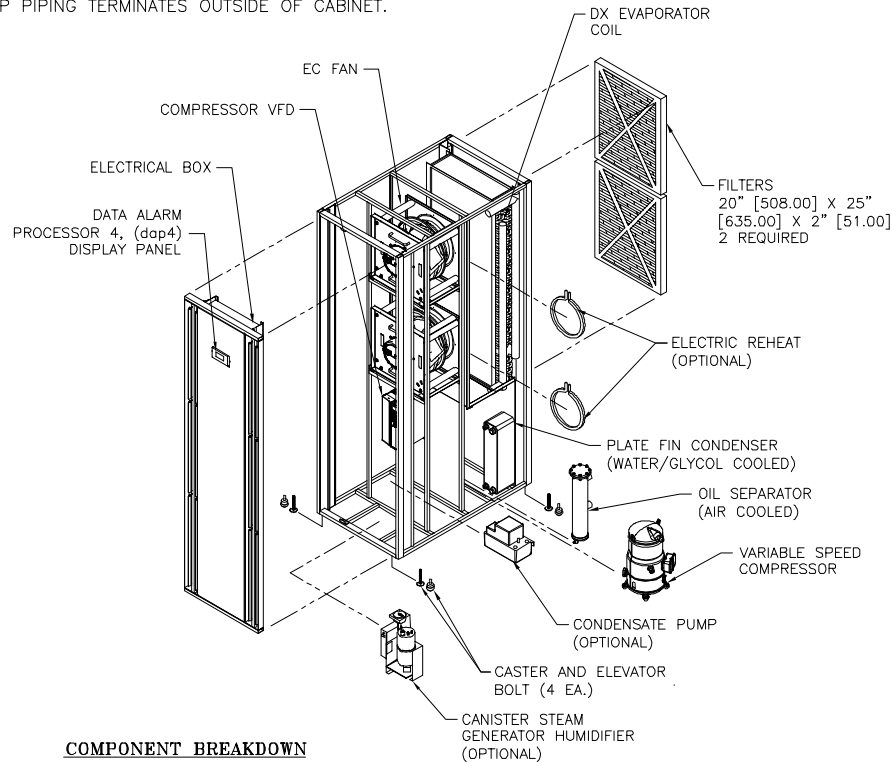


**NOTES:**

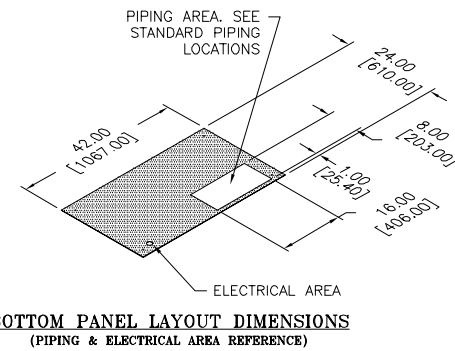
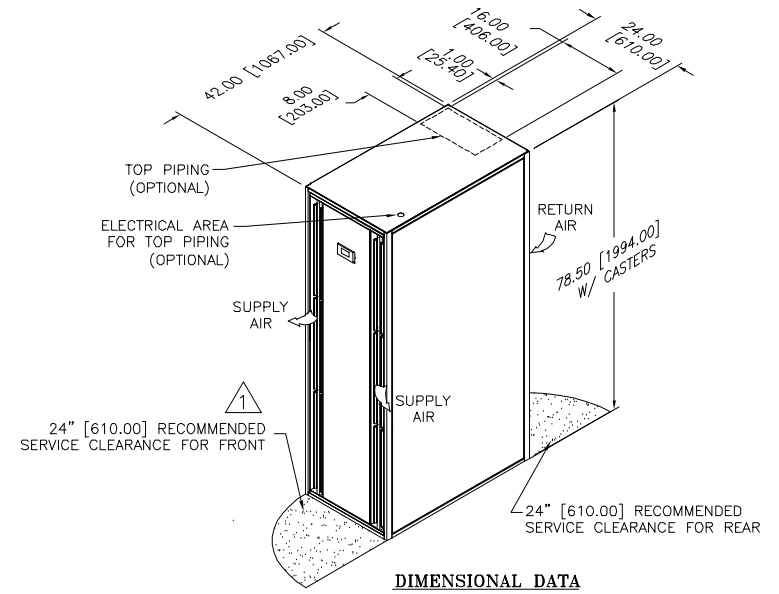
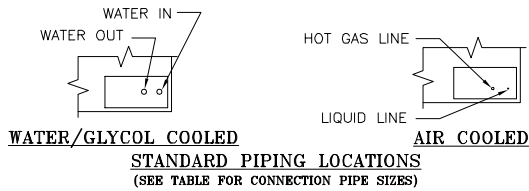
1. DIMENSIONS NOTED ARE THE MINIMUM CLEARANCES REQUIRED BY THE FACTORY, CONSULT LOCAL BUILDING CODES AND NEC FOR ADDITIONAL CLEARANCE REQUIREMENTS.
2. NOT ALL COMPONENTS AND OPTIONS ARE SHOWN.
3. ALL UNIT DIMENSIONS ARE IN INCH [mm] FORMAT.
4. ALL STANDARD PIPING TERMINATES INSIDE OF CABINET. ALL OPTIONAL TOP PIPING TERMINATES OUTSIDE OF CABINET.

CONNECTION PIPE SIZE (O.D.)				
UNIT (KW)	22		35	
HOT GAS	5/8	[15.88]	7/8	[22.23]
LIQUID	5/8	[15.88]	7/8	[22.23]
WATER/GLYCOL	1 1/8	[28.58]	1 3/8	[34.93]

REVISIONS			
REV	DESCRIPTION	DATE	BY
G	UPDATE WATER/GLYCOL CONNECTION PIPE SIZES ADDED CASTERS AND ELEVATOR BOLTS	06-19-18	MTC



**COMPONENT BREAKDOWN**



gForce IR  
22 & 35 KW  
DIRECT EXPANSION

**dataaire**

DRAWN BY : J. PERKINS	SCALE: 1:49
CHECKED BY : G. MAGAÑA	SH 1 OF 1
DATE : 04-12-2013	REV G

PART OF  
**565-900-401**  
DWG NO.