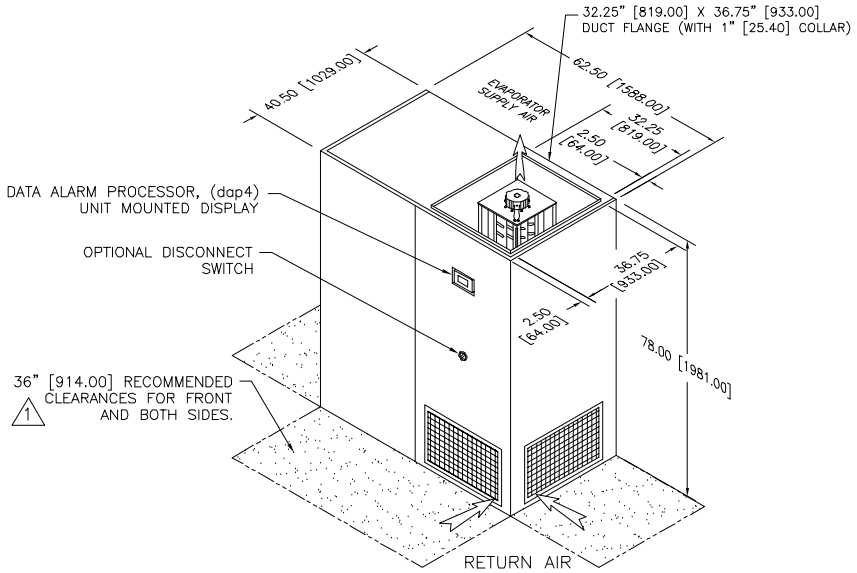


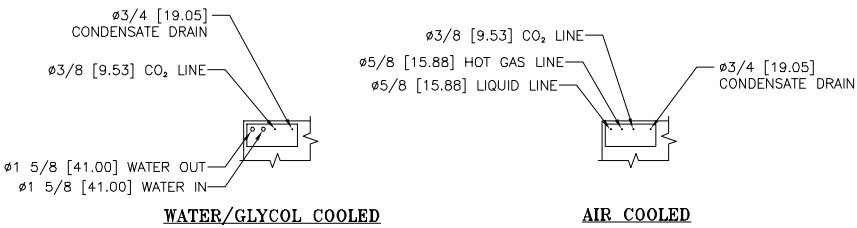
**NOTES:**

- 1. DIMENSIONS NOTED ARE THE MINIMUM CLEARANCES REQUIRED BY THE FACTORY. CONSULT LOCAL BUILDING CODES AND NEC FOR ADDITIONAL CLEARANCE REQUIREMENTS.
- 2. ALL STANDARD PIPING TERMINATES INSIDE OF CABINET.
- 3. ALL OPTIONAL PIPING (TOP/SIDE) TERMINATES OUTSIDE THE CABINET.
- 4. ALL COMPONENTS AND OPTIONS ARE NOT SHOWN.
- 4. ALL UNIT DIMENSIONS ARE IN INCH [mm] FORMAT.

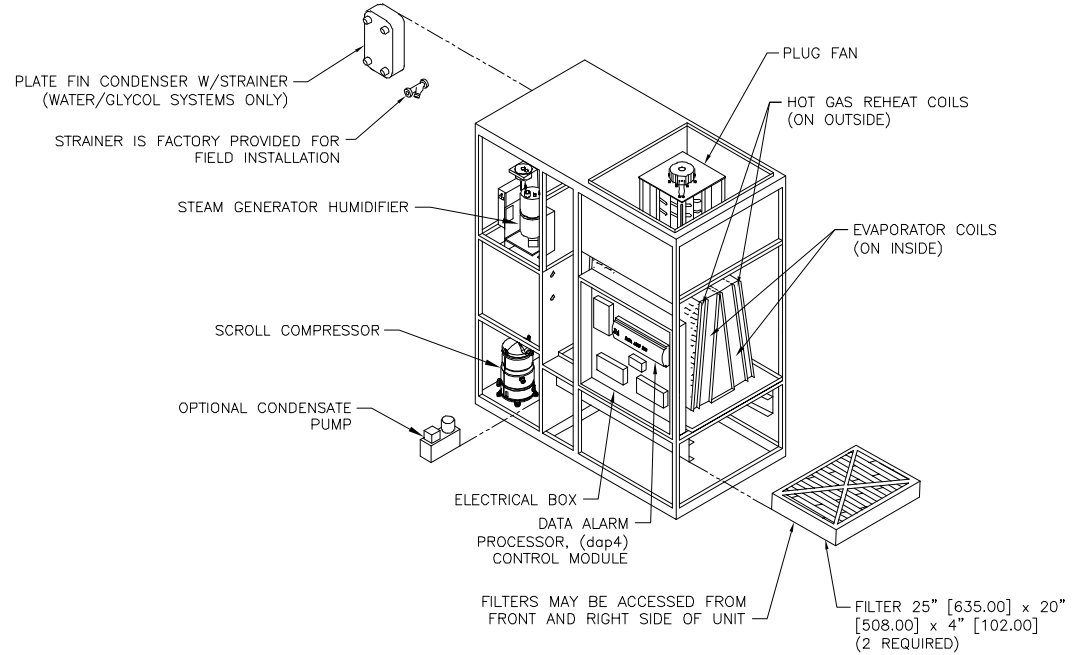
REVISIONS				
REV	DESCRIPTION	DATE	BY	FROM
D	UPDATED DUCT FLANGE CALLOUT	10-11-18	MTC	AD



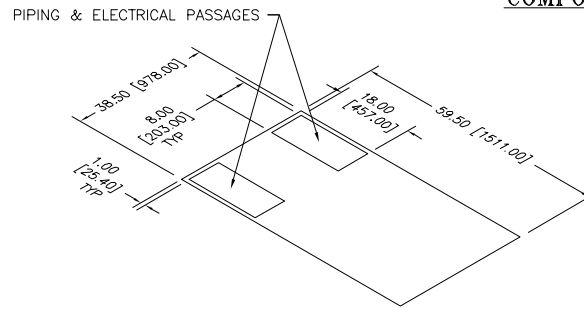
**DIMENSIONAL DATA**



**STANDARD PIPING LOCATIONS**



**COMPONENT BREAKDOWN**



**FLOOR LAYOUT DIMENSIONS**

G-POD FLOOR UNIT DX UPFLOW 8, 10, 13 TON			
<b>dataaire</b>			
DRAWN BY :	RRK	SCALE:	NONE
CHECKED BY :		SH	1 OF 1
DATE :	04-25-2016	REV	D
PART OF			
570-900-741			
DWG NO.			