
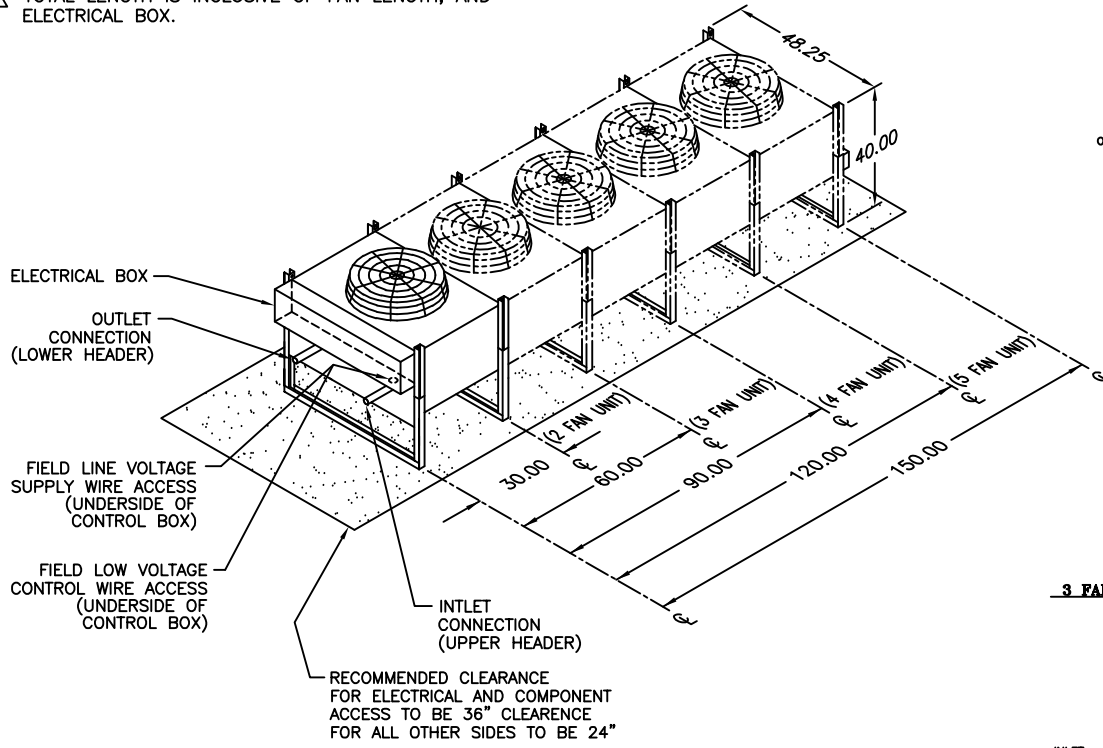


NOTES:

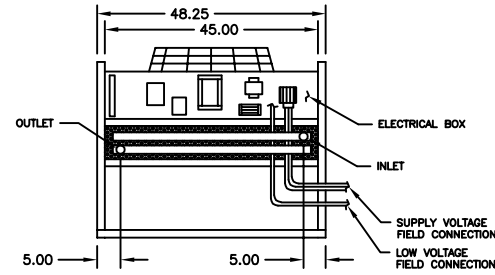
1. UNIT WEIGHT IS AN ESTIMATED UNCRATED WEIGHT.

 TOTAL LENGTH IS INCLUSIVE OF FAN LENGTH, AND ELECTRICAL BOX.

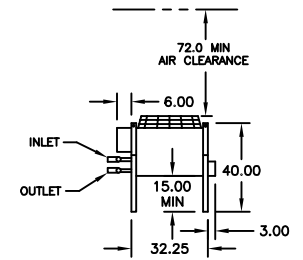


REVISIONS

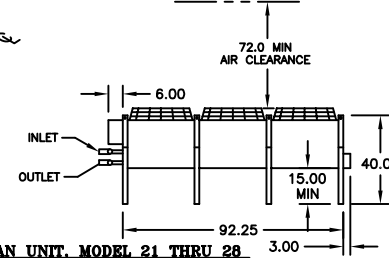
REV	DESCRIPTION	DATE	BY	CHKBY
D	REVISED STANDARD FLUID COOLER MOTOR FLA	04-07-20	EB	BM



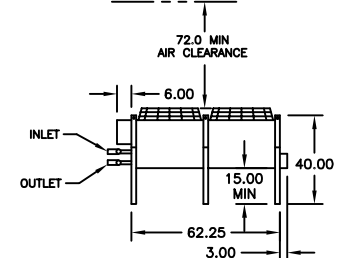
END VIEW CONNECTION LOCATION



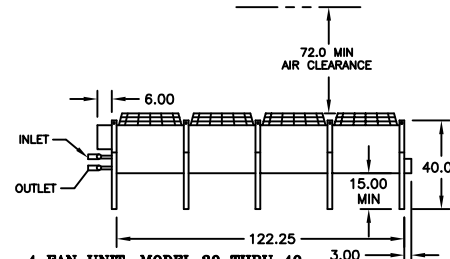
1 FAN UNIT, MODEL 6 THRU 9



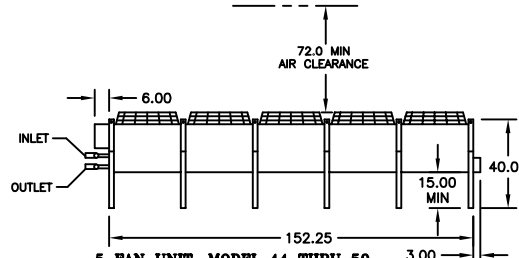
3 FAN UNIT, MODEL 21 THRU 28



2 FAN UNIT, MODEL 11 THRU 17



4 FAN UNIT, MODEL 30 THRU 40



5 FAN UNIT, MODEL 44 THRU 50

DAFC 6-50 TON
FLUID COOLERS



DRAWN BY : GABE SCALE: NONE
CHECKED BY : SH 1 OF 1
DATE : 01-05-2010 REV D

PART OF

600-000-754
DWG NO.

MODEL NUMBER	TOTAL LENGTH	UNIT NET WT.#	PIPE CONNECTION SIZES (COPPER STUB,OD)		QTY. MOTORS	STANDARD FLUID COOLER				LOW DECIBEL FLUID COOLER					
			INLET	OUTLET		H.P.	RPM	TOTAL CFM	MOTOR FLA	208/230V	460V	H.P.	RPM	TOTAL CFM	MOTOR FLA
DAFC 06	38-1/4"	260	1-5/8	1-5/8	1	3/4	1075	5000	3.6	1.8	1/2	850	4000	3.2	1.6
DAFC 07	38-1/4"	285	1-5/8	1-5/8	1	3/4	1075	4900	3.6	1.8	1/2	850	3900	3.2	1.6
DAFC 09	38-1/4"	310	1-5/8	1-5/8	1	3/4	1075	4800	3.6	1.8	1/2	850	3800	3.2	1.6
DAFC 11	68-1/4"	260	2-1/8	2-1/8	2	3/4	1075	10400	7.2	3.6	1/2	850	8300	6.4	3.2
DAFC 15	68-1/4"	370	2-1/8	2-1/8	2	3/4	1075	10000	7.2	3.6	1/2	850	8000	6.4	3.2
DAFC 17	68-1/4"	400	2-1/8	2-1/8	2	3/4	1075	9800	7.2	3.6	1/2	850	7800	6.4	3.2
DAFC 21	98-1/4"	560	2-1/8	2-1/8	3	3/4	1075	15000	10.8	5.4	1/2	850	12000	9.6	4.8
DAFC 24	98-1/4"	645	2-1/8	2-1/8	3	3/4	1075	14750	10.8	5.4	1/2	850	11800	9.6	4.8
DAFC 28	98-1/4"	665	2-1/8	2-1/8	3	3/4	1075	14500	10.8	5.4	1/2	850	11600	9.6	4.8
DAFC 30	128-1/4"	745	2-5/8	2-5/8	4	3/4	1075	20000	14.4	7.2	1/2	850	16000	12.8	6.4
DAFC 37	128-1/4"	845	2-5/8	2-5/8	4	3/4	1075	19500	14.4	7.2	1/2	850	15600	12.8	6.4
DAFC 40	128-1/4"	1100	2-5/8	2-5/8	4	3/4	1075	19000	14.4	7.2	1/2	850	15200	12.8	6.4
DAFC 44	158-1/4"	1460	2-5/8	2-5/8	5	3/4	1075	24500	18.0	9.0	1/2	850	19600	16.0	8.0
DAFC 50	158-1/4"	1560	2-5/8	2-5/8	5	3/4	1075	24000	18.0	9.0	1/2	850	19200	16.0	8.0