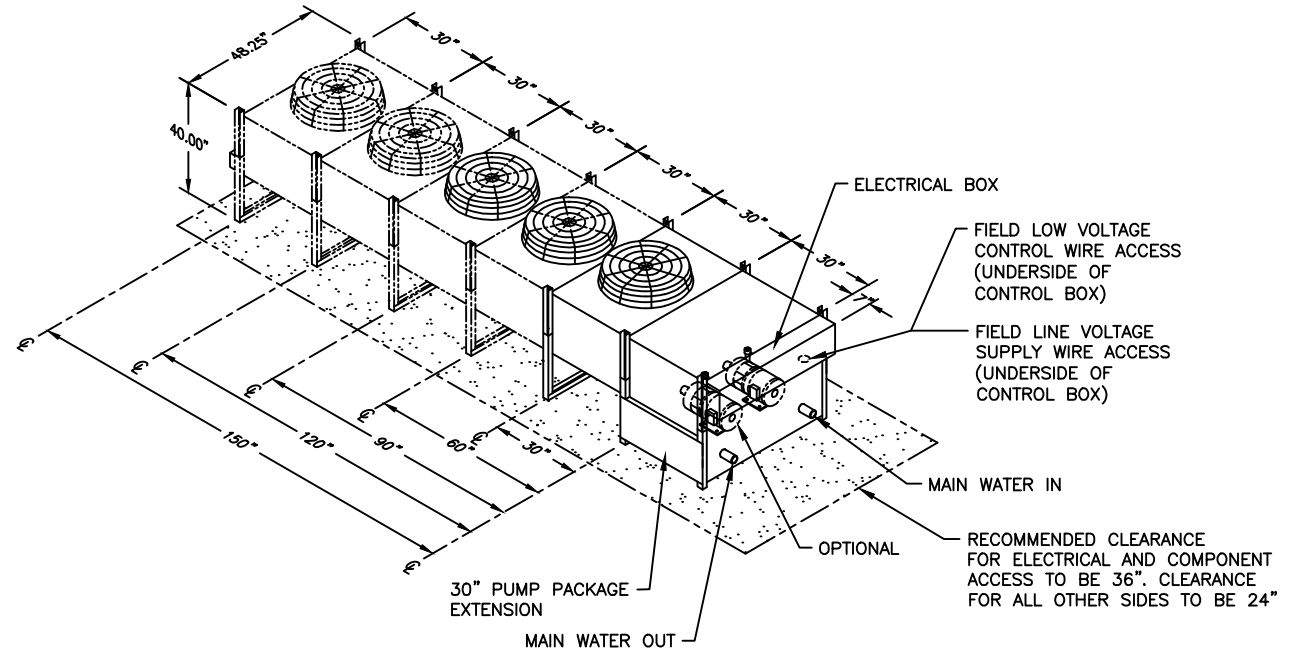
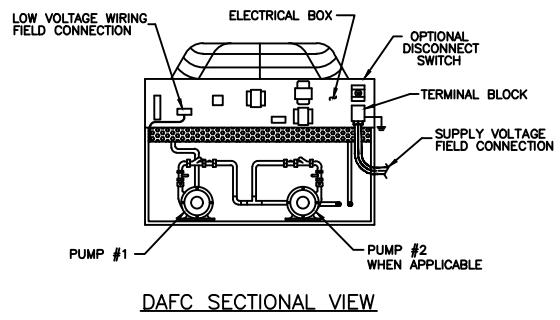


NOTES:

- UNIT WEIGHT IS AN ESTIMATED UNCRATED WEIGHT.
- △ TOTAL LENGTH IS INCLUSIVE OF FAN LENGTH, PUMP PACKAGE EXTENSION, AND ELECTRICAL BOX.

REVISIONS				
REV	DESCRIPTION	DATE	BY	CHKBY
C	REVISED PIPE CONNECTION SIZES	5-9-19	NM	RV



MODEL NUMBER	TOTAL LENGTH	UNIT NET WT.#	PIPE CONNECTION SIZES (COPPER STUB,OD)		QTY. MOTORS	STANDARD FLUID COOLER			LOW DECIBEL FLUID COOLER		
			INLET	OUTLET		H.P.	RPM	TOTAL CFM	H.P.	RPM	TOTAL CFM
DAFC 06	69-1/4"	260	1-5/8	1-5/8	1	3/4	1075	5000	1/2	850	4000
DAFC 07	69-1/4"	285	1-5/8	1-5/8	1	3/4	1075	4900	1/2	850	3900
DAFC 09	69-1/4"	310	1-5/8	1-5/8	1	3/4	1075	4800	1/2	850	3800
DAFC 11	99-1/4"	260	2-1/8	2-1/8	2	3/4	1075	10400	1/2	850	8300
DAFC 15	99-1/4"	370	2-1/8	2-1/8	2	3/4	1075	10000	1/2	850	8000
DAFC 17	99-1/4"	400	2-1/8	2-1/8	2	3/4	1075	9800	1/2	850	7800
DAFC 21	129-1/4"	560	2-1/8	2-1/8	3	3/4	1075	15000	1/2	850	12000
DAFC 24	129-1/4"	645	2-1/8	2-1/8	3	3/4	1075	14750	1/2	850	11800
DAFC 28	129-1/4"	665	2-1/8	2-1/8	3	3/4	1075	14500	1/2	850	11600
DAFC 30	159-1/4"	745	2-5/8	2-5/8	4	3/4	1075	20000	1/2	850	16000
DAFC 37	159-1/4"	845	2-5/8	2-5/8	4	3/4	1075	19500	1/2	850	15600
DAFC 40	159-1/4"	1100	2-5/8	2-5/8	4	3/4	1075	19000	1/2	850	15200
DAFC 44	189-1/4"	1460	2-5/8	2-5/8	5	3/4	1075	24500	1/2	850	19600
DAFC 50	189-1/4"	1560	2-5/8	2-5/8	5	3/4	1075	24000	1/2	850	19200

DAFC 06-50 TON SINGLE WIDE FLUID COOLER WITH INTEGRAL SINGLE OR DUAL PUMP PACKAGE

DRAWN BY : D. WILSON SCALE: NONE
 CHECKED BY : SH 1 OF 1
 DATE : 02-08-2010 REV C

PART OF
600-000-771
 DWG NO.