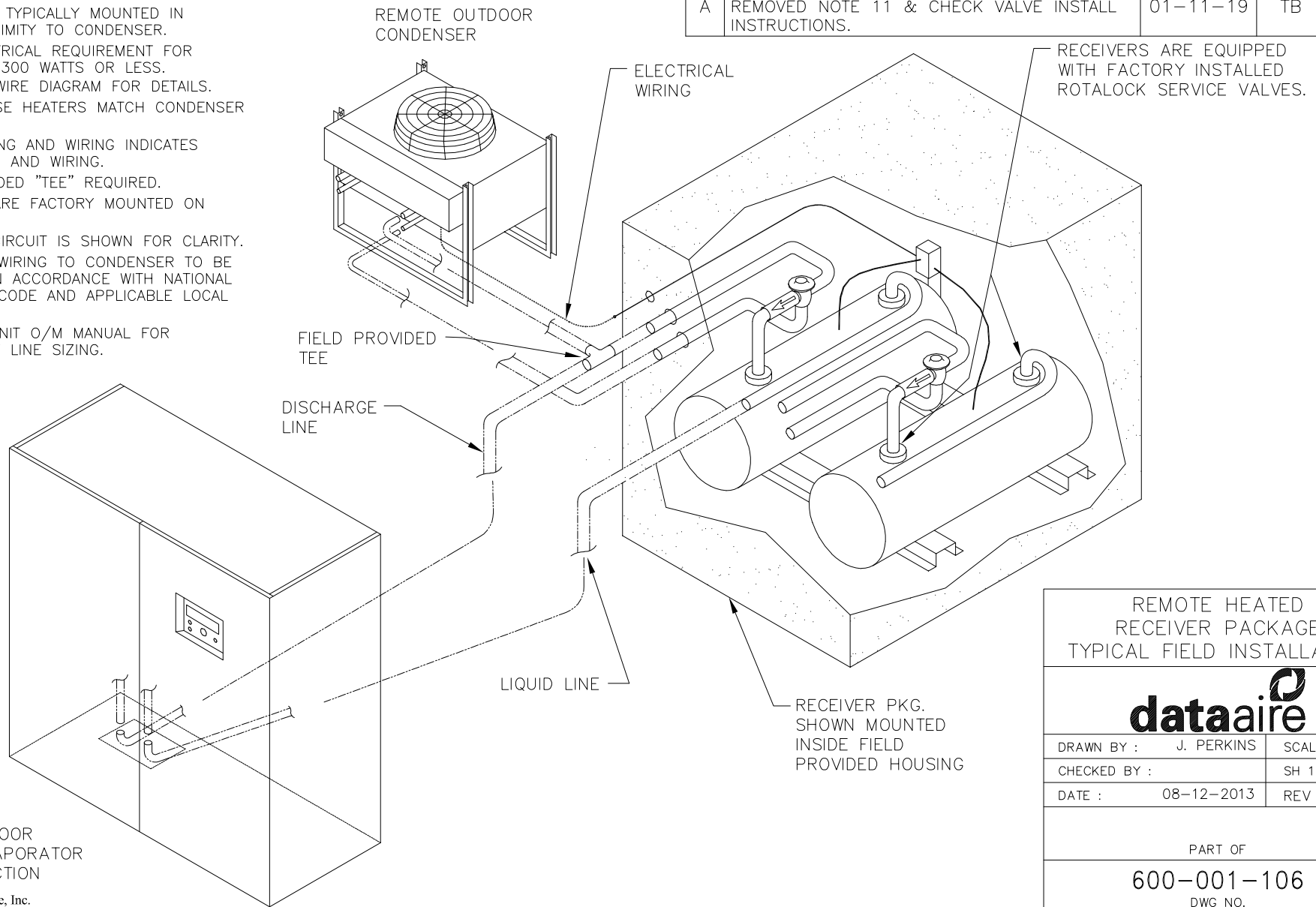


NOTES:

1. FIELD PROVIDED HOUSING RECOMMENDED.
2. RECEIVER IS TYPICALLY MOUNTED IN CLOSE PROXIMITY TO CONDENSER.
3. TOTAL ELECTRICAL REQUIREMENT FOR HEATERS IS 300 WATTS OR LESS. (REFER TO WIRE DIAGRAM FOR DETAILS.
4. SINGLE PHASE HEATERS MATCH CONDENSER VOLTAGE.
5. DOTTED PIPING AND WIRING INDICATES FIELD PIPING AND WIRING.
6. FIELD PROVIDED "TEE" REQUIRED.
7. RECEIVERS ARE FACTORY MOUNTED ON RAILS.
8. ONLY ONE CIRCUIT IS SHOWN FOR CLARITY.
9. ELECTRICAL WIRING TO CONDENSER TO BE INSTALLED IN ACCORDANCE WITH NATIONAL ELECTRICAL CODE AND APPLICABLE LOCAL CODES.
10. REFER TO UNIT O/M MANUAL FOR REFRIGERANT LINE SIZING.

REVISIONS				
REV	DESCRIPTION	DATE	BY	CHKBY
A	REMOVED NOTE 11 & CHECK VALVE INSTALL INSTRUCTIONS.	01-11-19	TB	AD



REMOTE HEATED RECEIVER PACKAGE
TYPICAL FIELD INSTALLATION

dataaire

DRAWN BY :	J. PERKINS	SCALE:	NONE
CHECKED BY :		SH	1 OF 1
DATE :	08-12-2013	REV	A

PART OF

600-001-106
DWG NO.