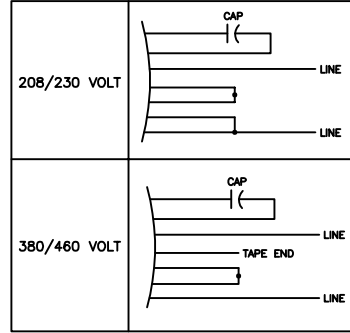


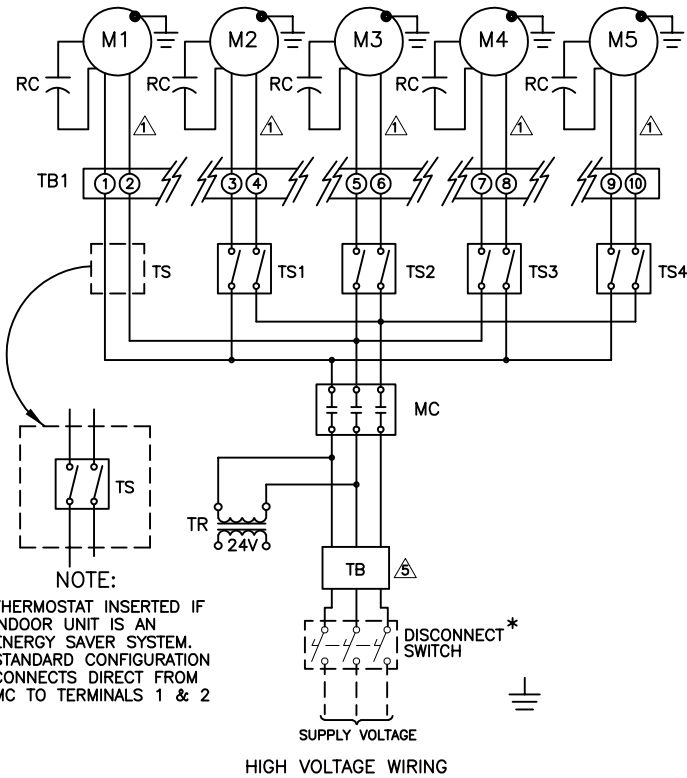
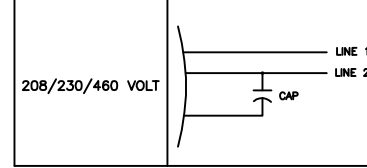
**NOTES:**

1. ELECTRICAL INSTALLATION MUST COMPLY WITH ALL APPLICABLE CODES.
2. MOTOR QUANTITY MAY VARY.
3. ALL FAN MOTORS 3/4 HP AND LESS WILL BE SINGLE PHASE.
4. USE COPPER CONDUCTORS.
5. DATA AIRE PUMPS PROVIDED WITHOUT AN INTERNAL THERMAL OVERLOAD PROTECTOR. FIELD WIRED PUMPS REQUIRE FIELD PROVIDED OVERLOAD PROTECTORS.

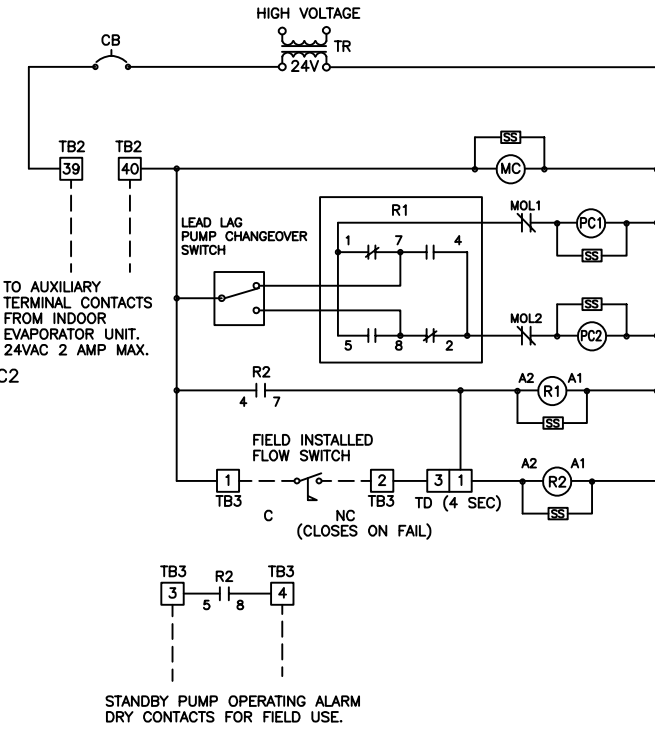
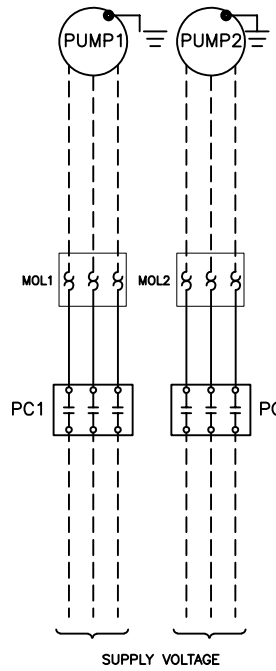
**FASCO MOTOR WIRE CONNECTIONS**



**MARATHON LOW DECIBEL MOTOR WIRE CONNECTIONS**



**NOTE:**  
THERMOSTAT INSERTED IF INDOOR UNIT IS AN ENERGY SAVER SYSTEM. STANDARD CONFIGURATION CONNECTS DIRECT FROM MC TO TERMINALS 1 & 2



**PANEL LEGEND**

- C = COMMON
  - CB = CIRCUIT BREAKER
  - M = MOTOR
  - MC = MOTOR CONTACTOR
  - MOL = MOTOR OVERLOAD
  - NC = NORMALLY CLOSED
  - PC = PUMP CONTACTOR
  - R = RELAY
  - RC = RUN CAPACITOR
  - SS = SURGE SUPPRESSOR
  - TB = TERMINAL BLOCK
  - TD = TIME DELAY
  - TR = TRANSFORMER
  - TS = THERMOSTAT
- N = TERMINAL BLOCK NO.  
 \* = OPTIONAL COMPONENTS  
 - - - = FIELD WIRING  
A = SEE TABLE FOR MOTOR WIRING CONNECTIONS  
A = TB MAY BE OMITTED WHEN DISCONNECT SWITCH IS USED

© Copyright 2018 Data Aire, Inc.



**REMOTE FLUID COOLER PUMP AUTOCHANGEOVER CONTROL**

JOB NO:	DRAWN BY:
PROJECT NO: DFCS051	M. COCHRAN
EFFECTIVITY DATE:	CHECKED BY:
08-21-2019	F. BELTRAN
OPTION:	EFFECTIVITY DATE:
	08-21-2019
	REVISION:
	F

DIAGRAM NO:  
**DFC-S-051**