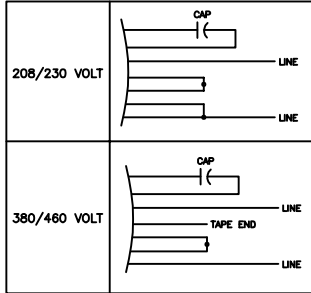


**NOTES:**

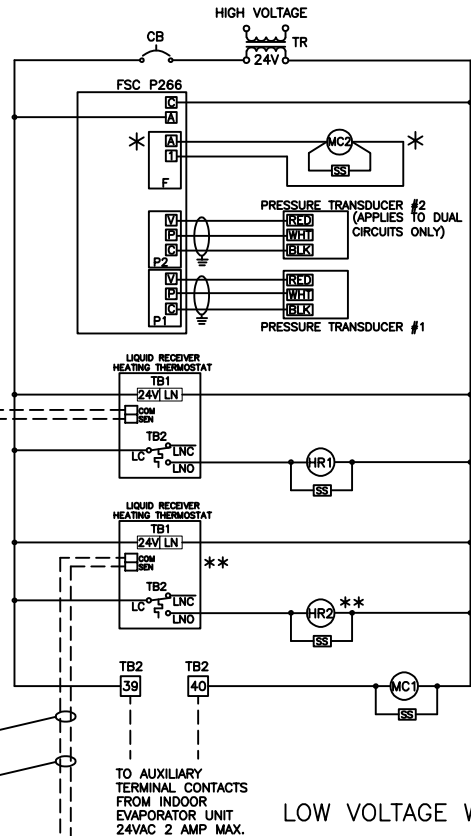
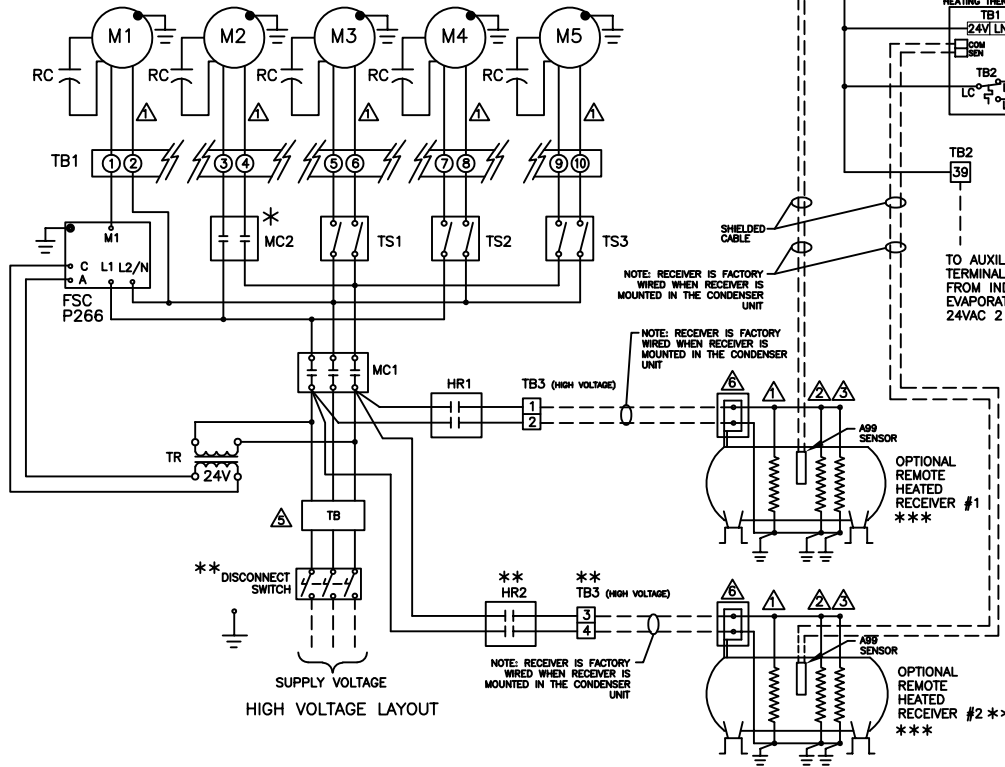
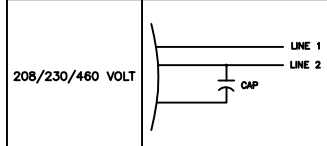
1. ELECTRICAL INSTALLATION MUST COMPLY WITH ALL APPLICABLE CODES.
2. MOTOR QUANTITY MAY VARY.
3. ALL FAN MOTORS 3/4 HP AND LESS WILL BE SINGLE PHASE.
4. USE COPPER CONDUCTORS.

TYPICAL WIRING DIAGRAM FOR REMOTE AIR COOLED CONDENSERS USED WITH DATA AIR COMPUTER UNITS. WITH RECEIVER(S) AND HEAD PRESSURE CONTROL VALVE(S)

**FASCO MOTOR WIRE CONNECTIONS**



**MARATHON LOW DECIBEL MOTOR WIRE CONNECTIONS**



\*\*\*

OPTIONS FOR RECEIVER CRANKCASE HEATERS (CCHTR)					
RECEIVER SIZE	CIRCUIT(S)	VOLTAGE	DESCRIPTION	CCHTR QTY	PART NO.
SMALL	SINGLE	208/230	CCHTR X1, 90W	1	153-090-001
		460	CCHTR X1, 70W	1	153-035-004
		575	CCHTR X1, 70W	1	153-035-005
SMALL	DUAL	208/230	CCHTR X2, 90W	2	153-090-001
		460	CCHTR X2, 70W	2	153-035-004
		575	CCHTR X2, 70W	2	153-035-005
MEDIUM	SINGLE	208/230	CCHTR X2, 90W	2	153-090-001
		460	CCHTR X2, 70W	2	153-035-004
		575	CCHTR X2, 70W	2	153-035-005
MEDIUM	DUAL	460	CCHTR X4, 70W	4	153-035-004
		575	CCHTR X4, 70W	4	153-035-005
		460	CCHTR X3, 90W	3	153-090-002
LARGE	SINGLE	575	CCHTR X3, 90W	3	153-090-003
		575	CCHTR X6, 90W	6	153-090-003
X-LARGE	DUAL	575	CCHTR X6, 90W	6	153-090-003

**PANEL LEGEND**

- CB = CIRCUIT BREAKER
  - FSC = FAN SPEED CONTROLLER
  - HR = HEATER RELAY
  - M = MOTOR
  - MC = MOTOR CONTACTOR
  - RC = RUN CAPACITOR
  - SS = SURGE SUPPRESSOR
  - TB = TERMINAL BLOCK
  - TR = TRANSFORMER
  - TS = THERMOSTAT
- ⊗ = TERMINAL BLOCK NO.
- \* = OPTIONAL COMPONENT
- \*\*\* = USE ON DUAL CIRCUIT CONDENSER
- \*\*\* = SEE TABLE FOR CCH DETAILS
- = FIELD WIRING
- ⚠ = SEE TABLE FOR MOTOR WIRING CONNECTIONS
- ⚠ = APPLIES TO MEDIUM DUAL CIRCUIT CCH
- ⚠ = APPLIES TO LARGE AND X-LARGE DUAL CIRCUIT CCH
- ⚠ = APPLIES TO SMALL SINGLE CIRCUIT CCH
- ⚠ = TB MAY BE OMITTED WHEN DISCONNECT SWITCH IS USED
- ⚠ = WIRES FROM THE CCH TO THE JUNCTION BOX SHALL BE RUN IN CONDUIT, INCLUDE 6" TO 8" OF EXTRA WIRE INSIDE THE JUNCTION BOX, FOR FIELD INSTALLATION THIS IS ONLY REQUIRED WHEN REMOTE RECEIVERS ARE USED

© Copyright 2018 Data Aire, Inc.



**PROJECT TITLE:**  
**REMOTE AIR COOLED CONDENSER FLOODED SYSTEM SINGLE/DUAL CIRCUIT**

JOB NO: \_\_\_\_\_ DRAWN BY: **M. COCHRAN**

PROJECT NO: **DRC5503** CHECKED BY: **F. BELTRAN**

EFFECTIVITY DATE: **04-11-2019**

OPTION: \_\_\_\_\_ REVISION: **B**

DIAGRAM NO: **DRC-S-503**