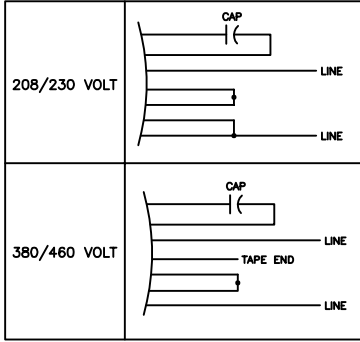


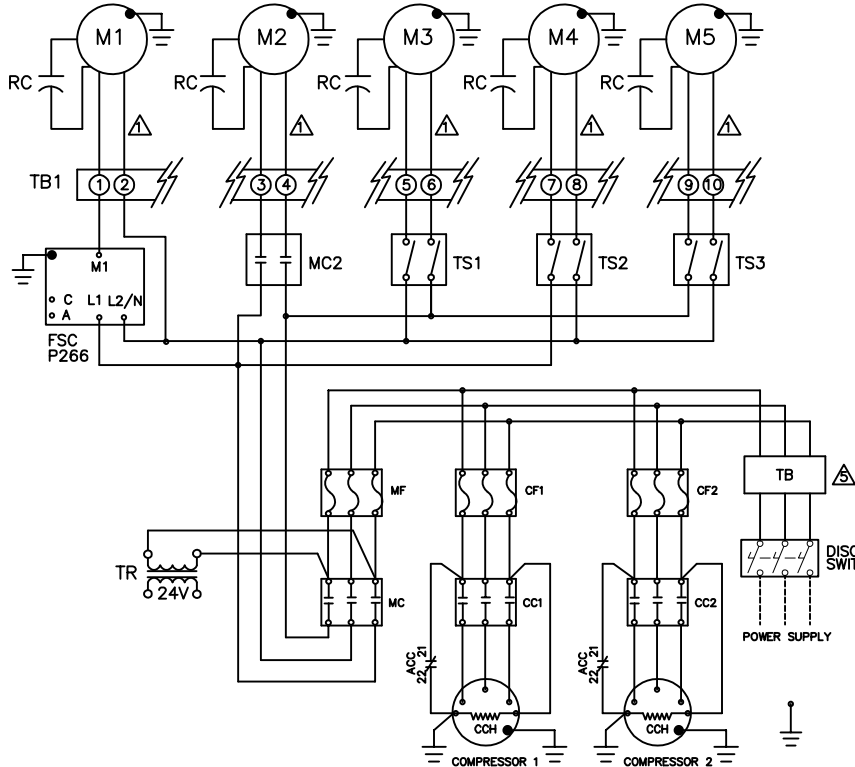
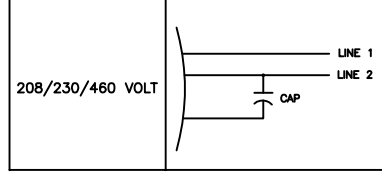
NOTES:

FOR PROPER OPERATION OF THE FAN SPEED CONTROLLER, THE TWO LEGS FEEDING THE TRANSFORMER SHOULD NOT BE THE SAME LEGS WHICH FEED MOTOR M1.

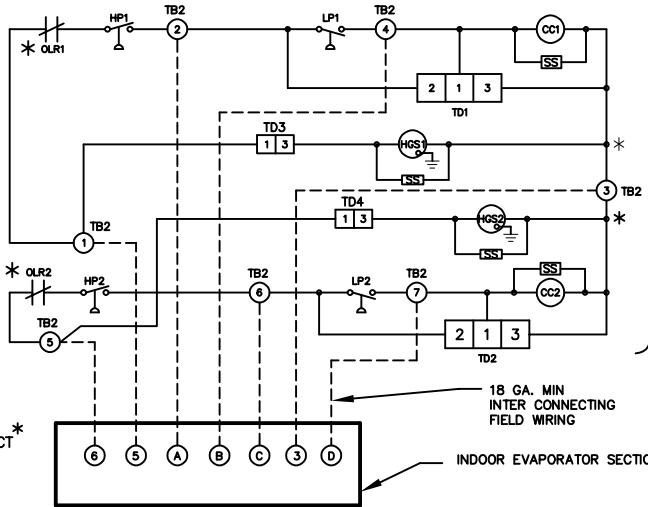
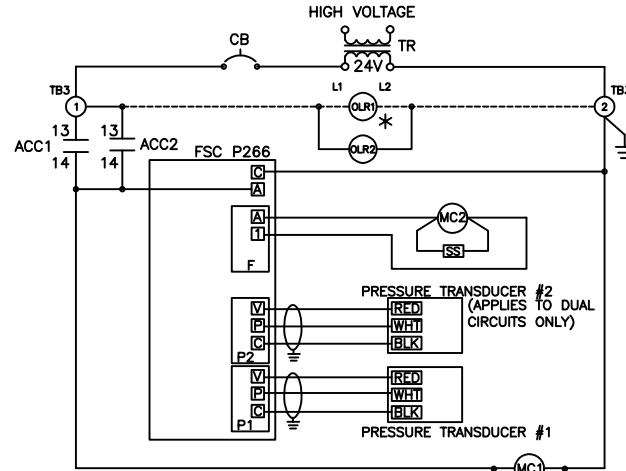
▲ FASCO MOTOR WIRE CONNECTIONS



▲ MARATHON LOW DECIBEL MOTOR WIRE CONNECTIONS



HIGH VOLTAGE WIRING



LOW VOLTAGE WIRING

	A	B	C	D
MINI DAP II	11	NA	12	NA
DAP II	22	23	24	25
DAP III & dap4	25	26	27	28
MINI DAP III	14	NA	15	NA

PANEL LEGEND

- ACC = AUXILIARY COMPRESSOR CONTACT
- CC = COMPRESSOR CONTACTOR
- CCH = CRANK-CASE HEATER
- CF = COMPRESSOR FUSE
- FSC = FAN SPEED CONTROLLER
- HGS = HOT GAS SOLENOID
- HP = HIGH PRESSURE CUTOOUT
- LP = LOW PRESSURE CUTOOUT
- M = MOTOR
- MC = MOTOR CONTACTOR
- MF = MOTOR FUSE
- NA = NOT APPLICABLE
- OLR = OVERLOAD RELAY FOR COMPRESSOR
- RC = RUN CAPACITOR
- SS = SURGE SUPPRESSOR
- TB = TERMINAL BLOCK
- TD = TIME DELAY
- TR = TRANSFORMER
- TS = THERMOSTAT

- = FIELD WIRING
- * = OPTIONAL COMPONENTS
- ▲ = SEE TABLE FOR MOTOR WIRING CONNECTIONS
- ▲ = TB MAY BE OMITTED WHEN DISCONNECT SWITCH IS USED

© Copyright 2018 Data Aire, Inc.



230 W. BLUERIDGE AVE. ORANGE, CA. 92865

DWG TITLE:
**REMOTE AIR COOLED
CONDENSING UNIT
(THREE PHASE)
WITH P266 FSC, 7-50 TON**

JOB NO:	DRAWN BY:
PROJECT NO: DRC548	M. COCHRAN
EFFECTIVITY DATE:	CHECKED BY:
04-08-2019	F. BELTRAN
OPTION:	REVISION:
	L

DIAGRAM NO:
DRC-S-548