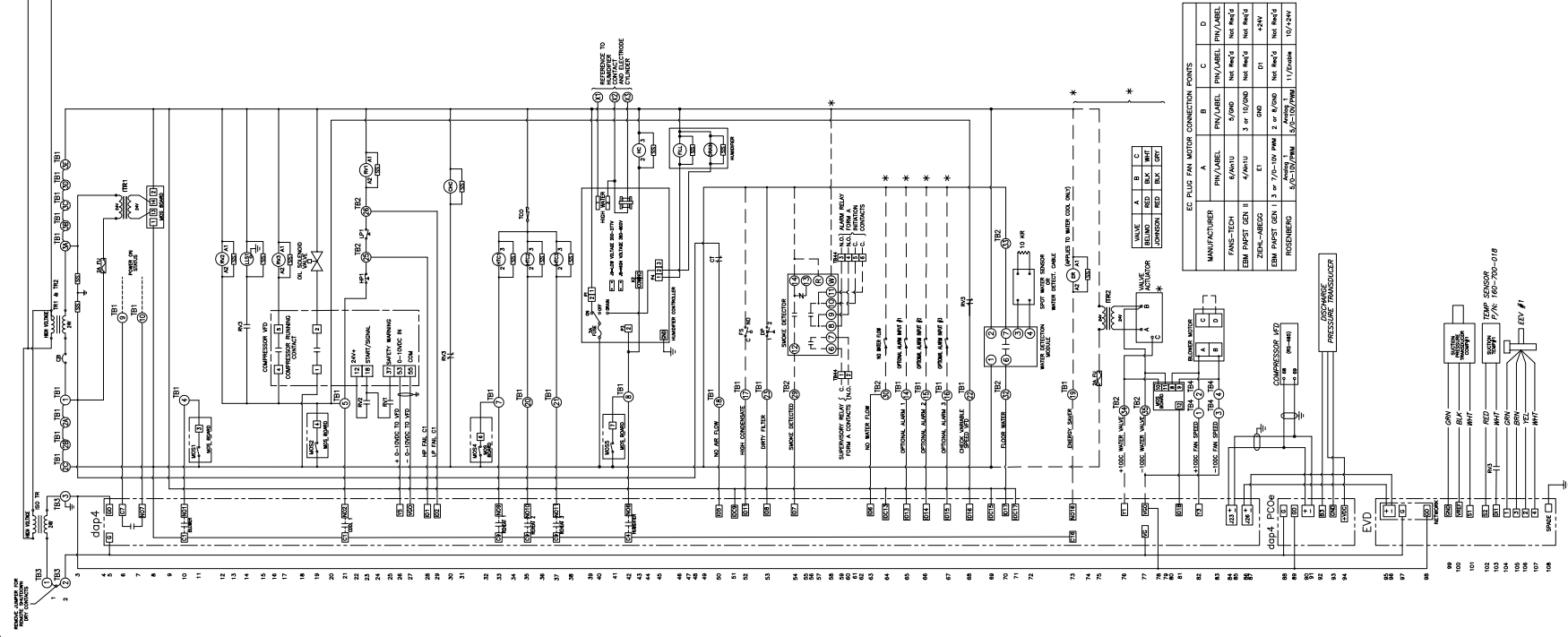
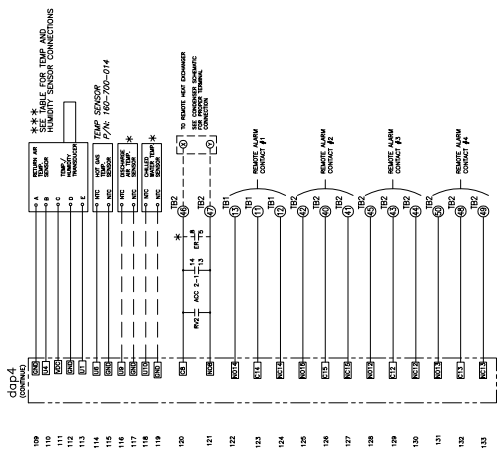


**TEMP. AND HUMIDITY SENSOR CONNECTION**

UNIT MOUNT	REMOTE MOUNT	UNIT AND REMOTE MOUNT
AZ	GRY	NTC
BT	GRY	NTC
CT	GRY	NTC
DA	GRY	NTC
DB	GRY	NTC
DC	GRY	NTC
DD	GRY	NTC
DE	GRY	NTC
DF	GRY	NTC
DG	GRY	NTC
DH	GRY	NTC
DI	GRY	NTC
DJ	GRY	NTC
DK	GRY	NTC
DL	GRY	NTC
DM	GRY	NTC
DN	GRY	NTC
DO	GRY	NTC
DP	GRY	NTC
DQ	GRY	NTC
DR	GRY	NTC
DS	GRY	NTC
DT	GRY	NTC
DU	GRY	NTC
DV	GRY	NTC
DW	GRY	NTC
DX	GRY	NTC
DY	GRY	NTC
DZ	GRY	NTC



**EC PLUG FAN MOTOR CONNECTION POINTS**

MANUFACTURER	A	B	C	D
FANS-TECH	6/A/HTU	5/F/ND	Not Req'd	Not Req'd
ERM PMPST GEN II	4/A/HTU	3 or 10/AND	Not Req'd	Not Req'd
ZELU-ABEGG	E1	END	Not Req'd	Not Req'd
ERM PMPST GEN I	3 or 7/A-10V P/ND	2 or 8/P/ND	Not Req'd	Not Req'd
ROSENBERG	6/2-10/2/ND	5/2-10/2/ND	11/ND/ND	10/2/2/ND

- PANEL LEGEND**
- CB = CIRCUIT BREAKER
  - CCH = CRANK-CASE HEATER
  - CT = CURRENT TRANSFORMER
  - dop4 = DATA ALARM PROCESSOR 4
  - DR = DIFFERENTIAL PRESSURE SWITCH
  - ER = ENERGY SAVER RELAY
  - FU = FUSE
  - HC = HUMIDIFIER CONTACTOR
  - HP = HIGH PRESSURE CUTOFF
  - HT = HEAT CONTACTOR
  - ITR = 24V TO 24V ISOLATION TRANSFORMER
  - LP = LOW PRESSURE CUTOFF
  - MOS = MANUAL OVERRIDE SWITCH BOARD
  - RV = VARIABLE SPEED RELAY
  - SFS = SECONDARY FLOAT SWITCH FOR THE CONDENSATE PUMP
  - SS = SURGE SUPPRESSOR
  - TB = TERMINAL BLOCK
  - TCC = THERMAL CUTOFF
  - TD = TIME DELAY
  - TR = TRANSFORMER
- ⊙ = TERMINAL BLOCK NO.
- = OPTIONAL WIRING
- \* = OPTIONAL COMPONENTS
- \*\*\* = TEMP. AND HUMIDITY SENSOR CONNECTION TABLE
- ⚠ = TB MAY BE OMITTED WHEN DISCONNECT SWITCH IS USED
- ⚡ = FOR CT THREE (3) LOOPS IS THE MINIMUM NUMBER OF LOOPS. AN ADDITIONAL LOOP, (4) IS ALSO ACCEPTABLE

© Copyright 2017 Data Aire, Inc.

**dataaire**

230 W. BLUERIDGE AVE. ORANGE, CA. 92665

DWG TITLE:  
**gForce CT SERIES 36-45KW**  
 with **VARIABLE SPEED**  
**COMPRESSOR AND**  
**dop4 CONTROLLER**

JOB NO:	DRAWN BY: <b>M. COCHRAN</b>
PROJECT NO: <b>GTUS903XY</b>	CHECKED BY: <b>F. BELTRAN</b>
OPTION:	EFFECTIVITY DATE: <b>06-13-2019</b>
DIAGRAM NO: <b>GTU-S-903 XY</b>	REVISION: <b>P</b>