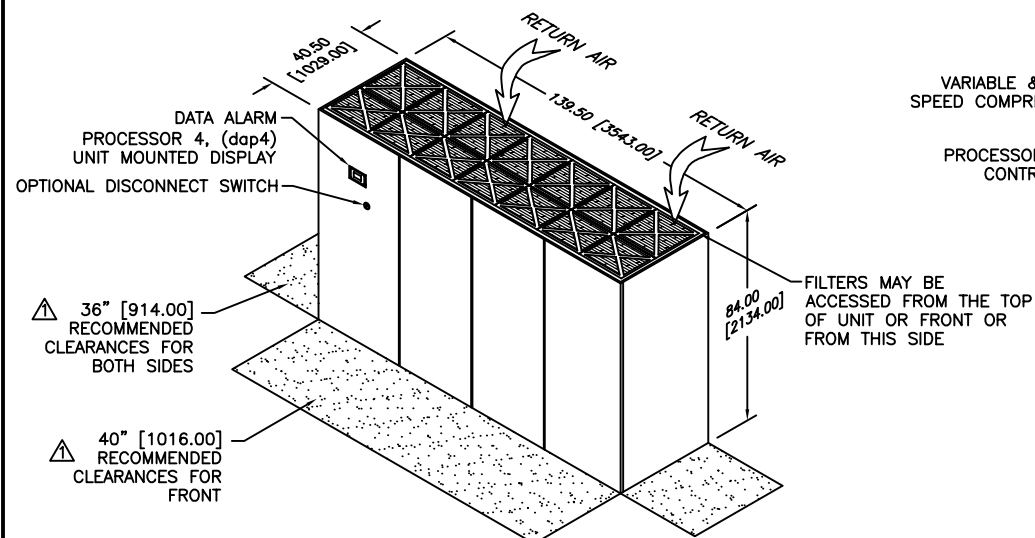
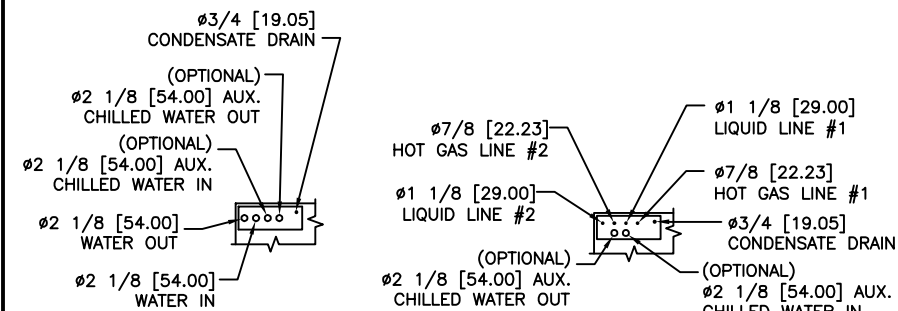


NOTES:

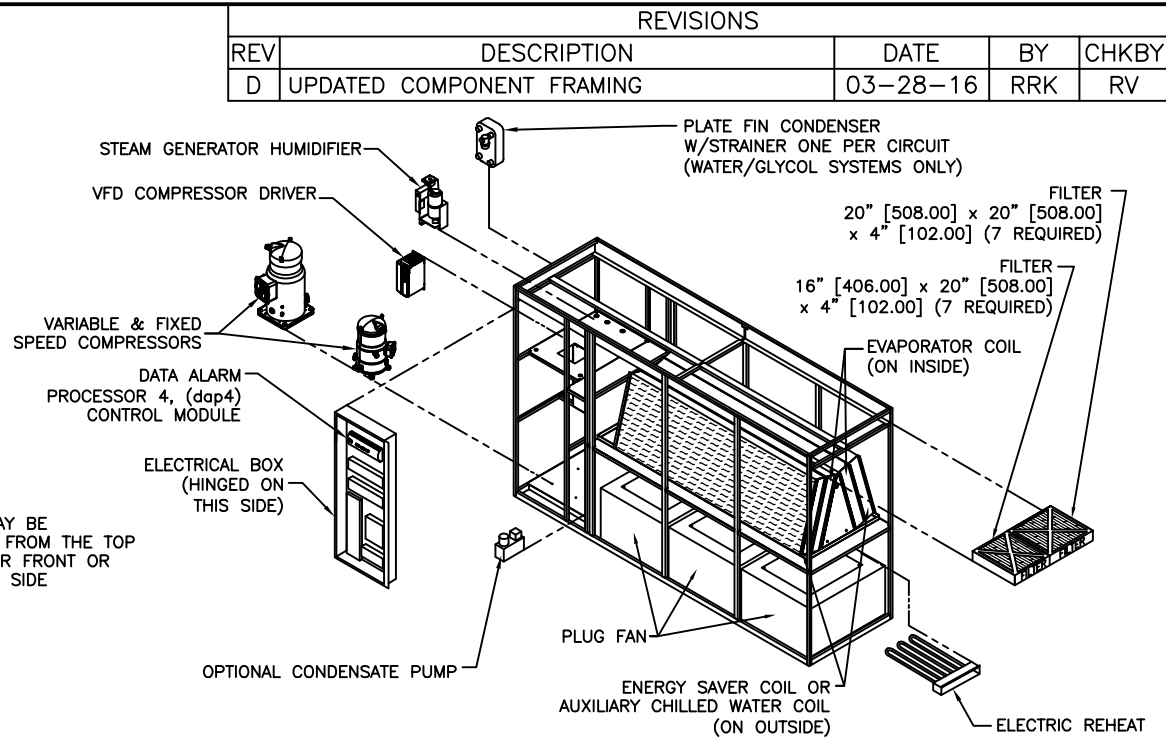
- 1. DIMENSIONS NOTED ARE THE MINIMUM CLEARANCES REQUIRED BY THE FACTORY. CONSULT LOCAL BUILDING CODES AND NEC FOR ADDITIONAL CLEARANCE REQUIREMENTS.
- 2. ALL STANDARD PIPING TERMINATES INSIDE OF CABINET. ALL OPTIONAL PIPING (TOP/SIDE) TERMINATES OUTSIDE OF CABINET.
- 3. NOT ALL COMPONENTS AND OPTIONS ARE SHOWN. LOCATIONS MAY VARY DEPENDING ON OPTIONS.
- 4. ALL UNIT DIMENSIONS ARE IN INCH [mm] FORMAT.



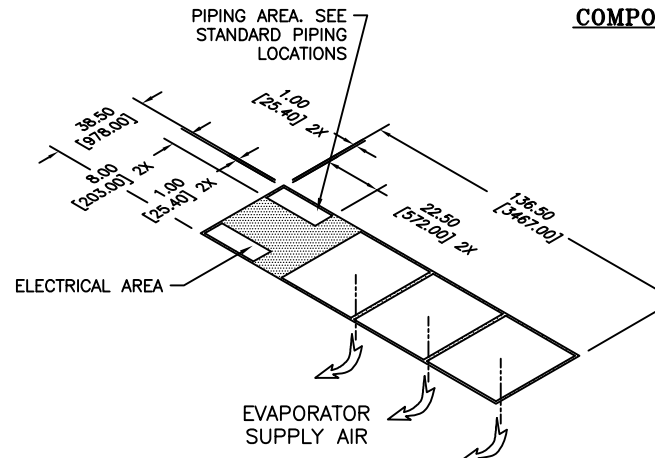
DIMENSIONAL DATA



STANDARD PIPING LOCATIONS



COMPONENT BREAKDOWN



FLOOR CUTOUT DIMENSIONS

REVISIONS				
REV	DESCRIPTION	DATE	BY	CHKBY
D	UPDATED COMPONENT FRAMING	03-28-16	RRK	RV

gForce ULTRA GU
 125 KW/DX DOWNFLOW
 WITH ENERGY SAVER COIL

dataaire

DRAWN BY :	RRK	SCALE: NONE
CHECKED BY :		SH 1 OF 1
DATE :	09-11-2014	REV D

PART OF
563-900-582
 DWG NO.