

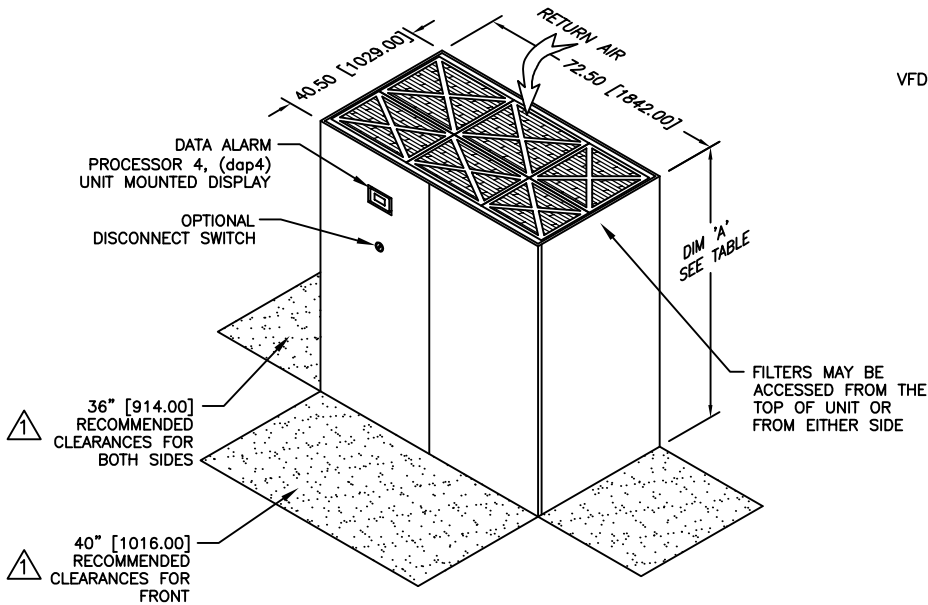
NOTES:

- 1. DIMENSIONS NOTED ARE THE MINIMUM CLEARANCES REQUIRED BY THE FACTORY. CONSULT LOCAL BUILDING CODES AND NEC FOR ADDITIONAL CLEARANCE REQUIREMENTS.
 - 2. ALL STANDARD PIPING TERMINATES INSIDE OF CABINET. ALL OPTIONAL PIPING (TOP/SIDE) TERMINATES OUTSIDE OF CABINET.
 - 3. NOT ALL COMPONENTS AND OPTIONS ARE SHOWN. LOCATIONS MAY VARY DEPENDING ON OPTIONS.
 - 4. ALL UNIT DIMENSIONS ARE IN INCH [mm] FORMAT.
- ⚠ SEE TABLE FOR CONNECTION PIPE SIZES.

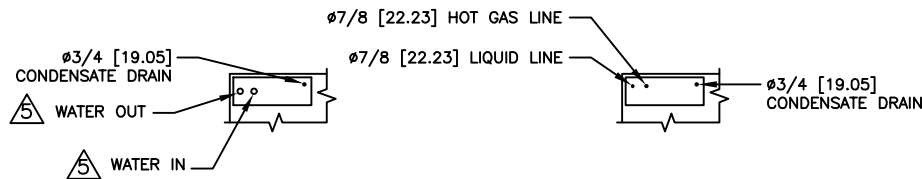
CONNECTION PIPE SIZE (Ø)			
UNIT (KW)	36		45
WATER IN/OUT	1 5/8 [41.00]	1 5/8 [41.00]	
AUX CHW IN/OUT	1 5/8 [41.00]	1 5/8 [41.00]	

DIM 'A'		
78.00"	[1981.00]	WITH 3KW FAN
84.00"	[2134.00]	WITH 5KW FAN

REVISIONS				
REV	DESCRIPTION	DATE	BY	CHKBY
C	CHANGED PIPE CONNECTION SIZES	11-02-15	RRK	GM



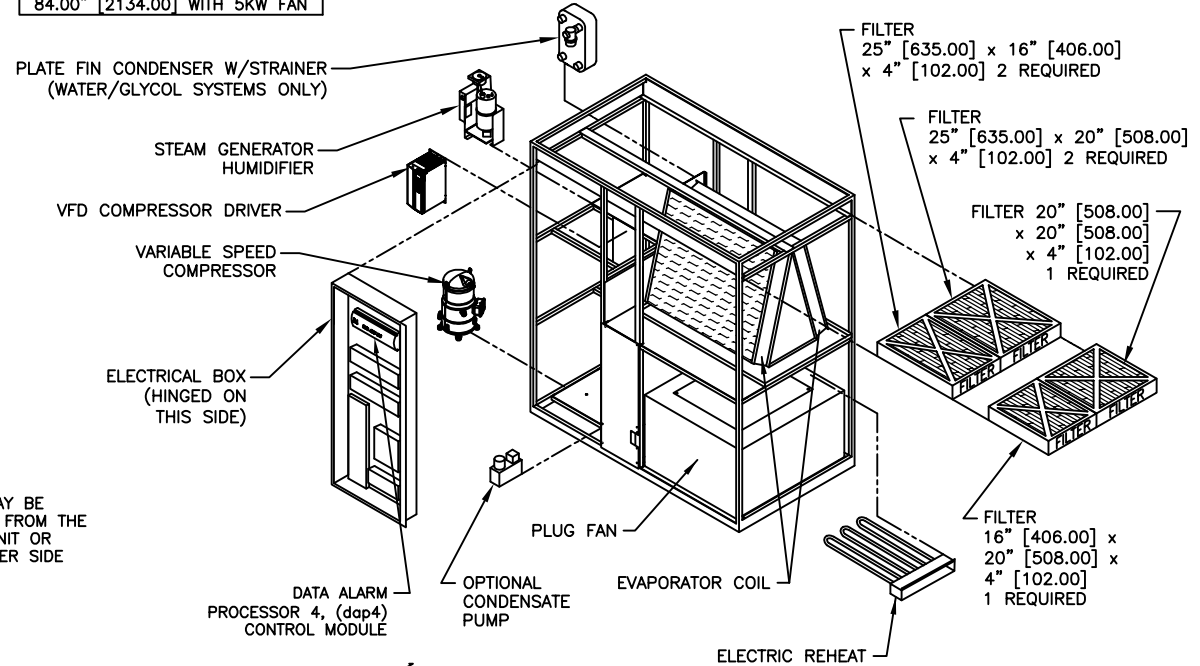
DIMENSIONAL DATA



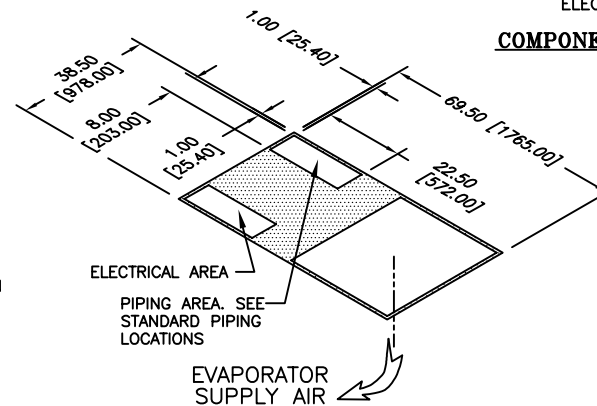
WATER/GLYCOL COOLED

AIR COOLED

STANDARD PIPING LOCATIONS



COMPONENT BREAKDOWN



FLOOR CUTOUT DIMENSIONS

gForce ULTRA GU
36 & 45 KW
DX DOWNFLOW



DRAWN BY :	RRK	SCALE: NONE
CHECKED BY :		SH 1 OF 1
DATE :	09-08-2014	REV C

PART OF

563-900-541

DWG NO.